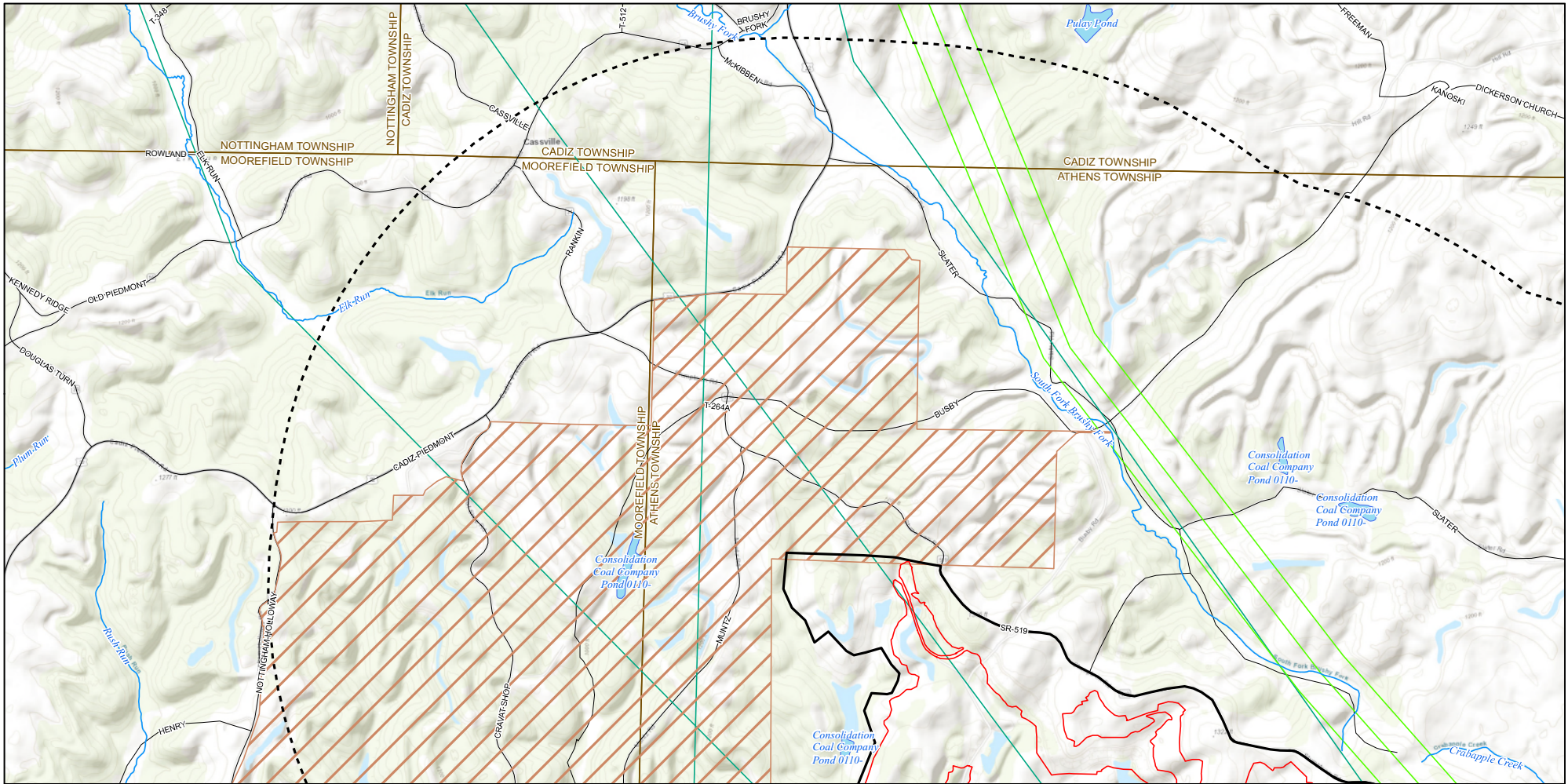


Figures

Figure 3-1 Project Two-Mile Radius Map

Figure 3-2 Project Site Layout Map

Figure 4-1 Project Constraints Map

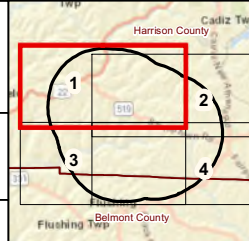


- | | | |
|--------------------|---------------------|----------------------------|
| Facility Footprint | Named NHD Streams | Existing Transmission Line |
| 2-Mile Radius | Named NHD Waterbody | Existing Pipeline |
| Project Area | ODNR Land | Local Road |
| | | Township Boundary |
| | | County Boundary |

Sources:
Imagery (ESRI-World
Topographic Map)

Coordinate System:
Ohio State Plane North
NAD 1983

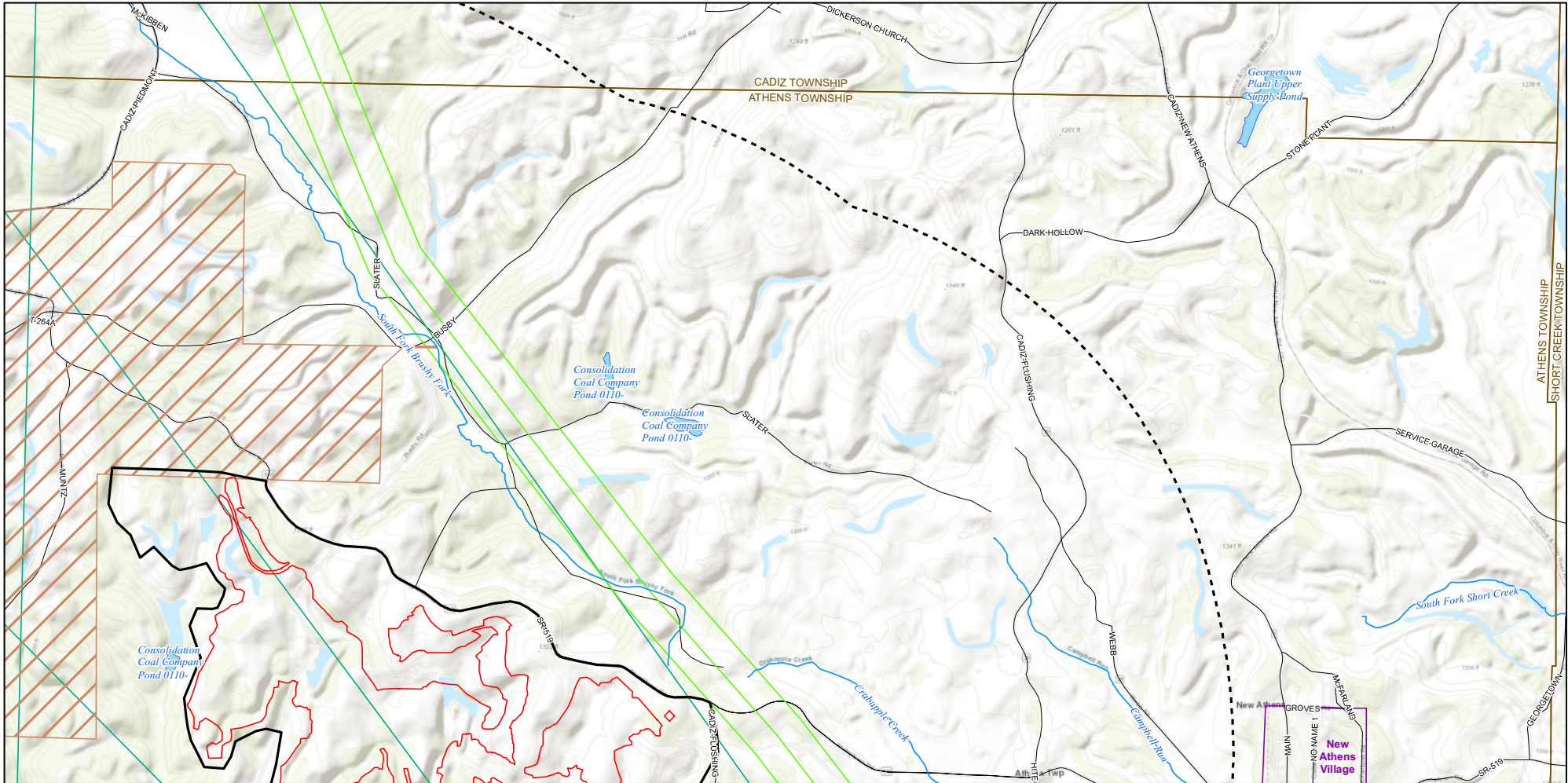
July 21, 2021



NOTTINGHAM SOLAR PROJECT
Figure 3-1
Two Mile Radius
Page 1 of 4



0 2,000 4,000
Feet

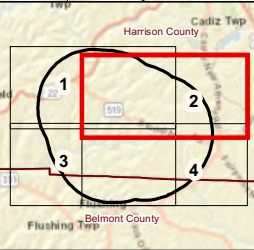


Facility Footprint	Named NHD Streams	Existing Transmission Line
Project Area	Named NHD Waterbody	Existing Pipeline
2-Mile Radius	ODNR Land	Local Road
		Municipal Boundary
		Township Boundary
		County Boundary

Sources:
Imagery (ESRI-World
Topographic Map)

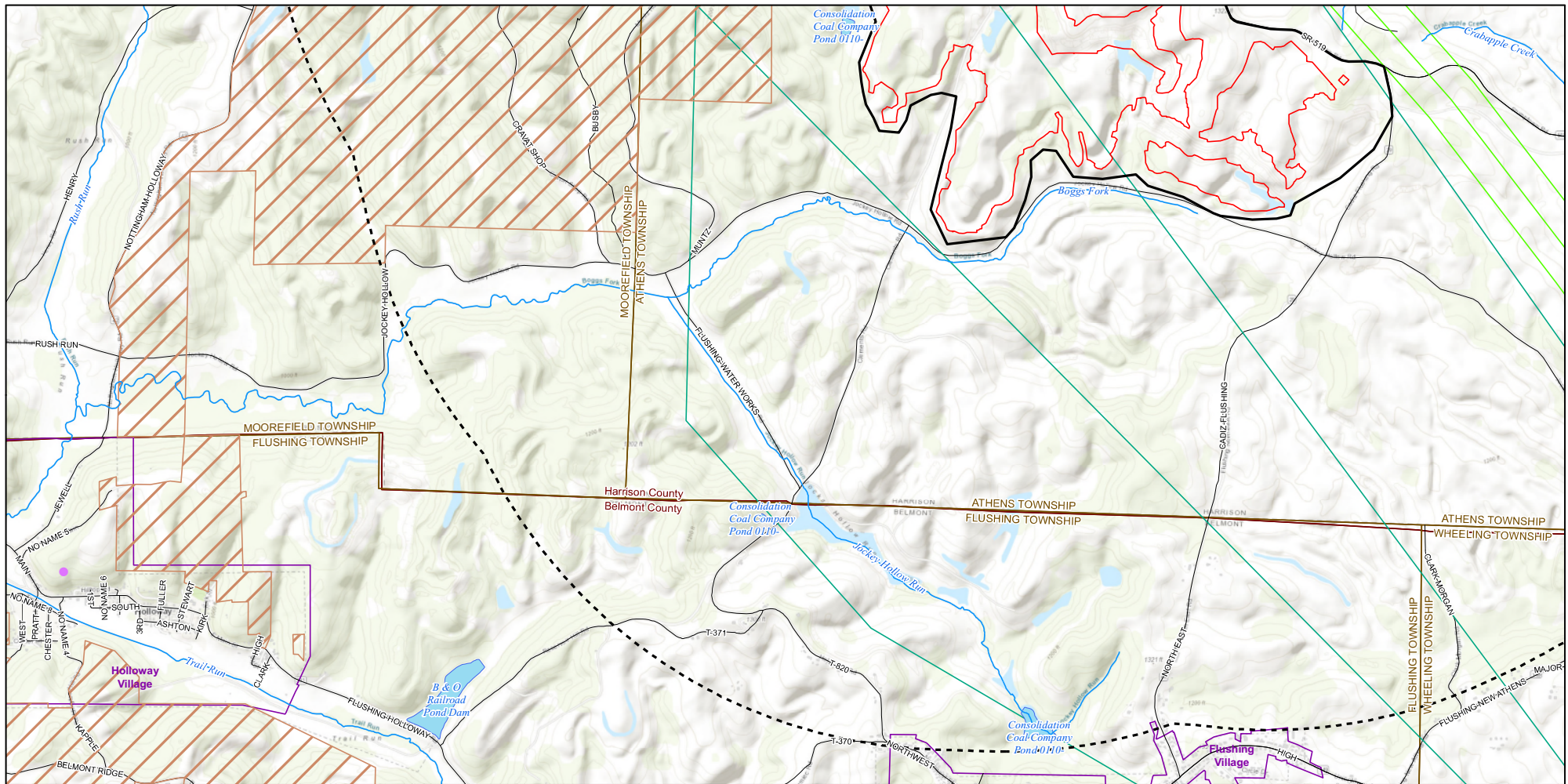
Coordinate System:
Ohio State Plane North
NAD 1983

July 21, 2021



NOTTINGHAM SOLAR PROJECT
Figure 3-1
Two Mile Radius
Page 2 of 4

0 2,000 4,000 Feet

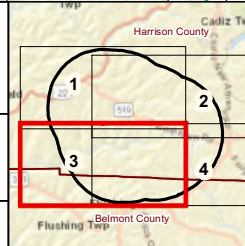


- | | | |
|--------------------|---------------------|----------------------------|
| Facility Footprint | Named NHD Streams | Existing Transmission Line |
| Project Area | Named NHD Waterbody | Existing Pipeline |
| 2-Mile Radius | ODNr Land | Local Road |
| | | Population Center |
| | | Municipal Boundary |
| | | Township Boundary |
| | | County Boundary |

Sources:
Imagery (ESRI-World
Topographic Map)

Coordinate System:
Ohio State Plane North
NAD 1983

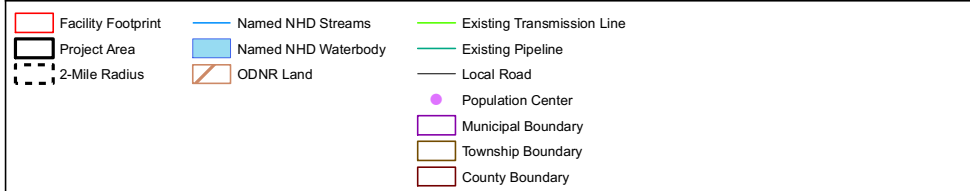
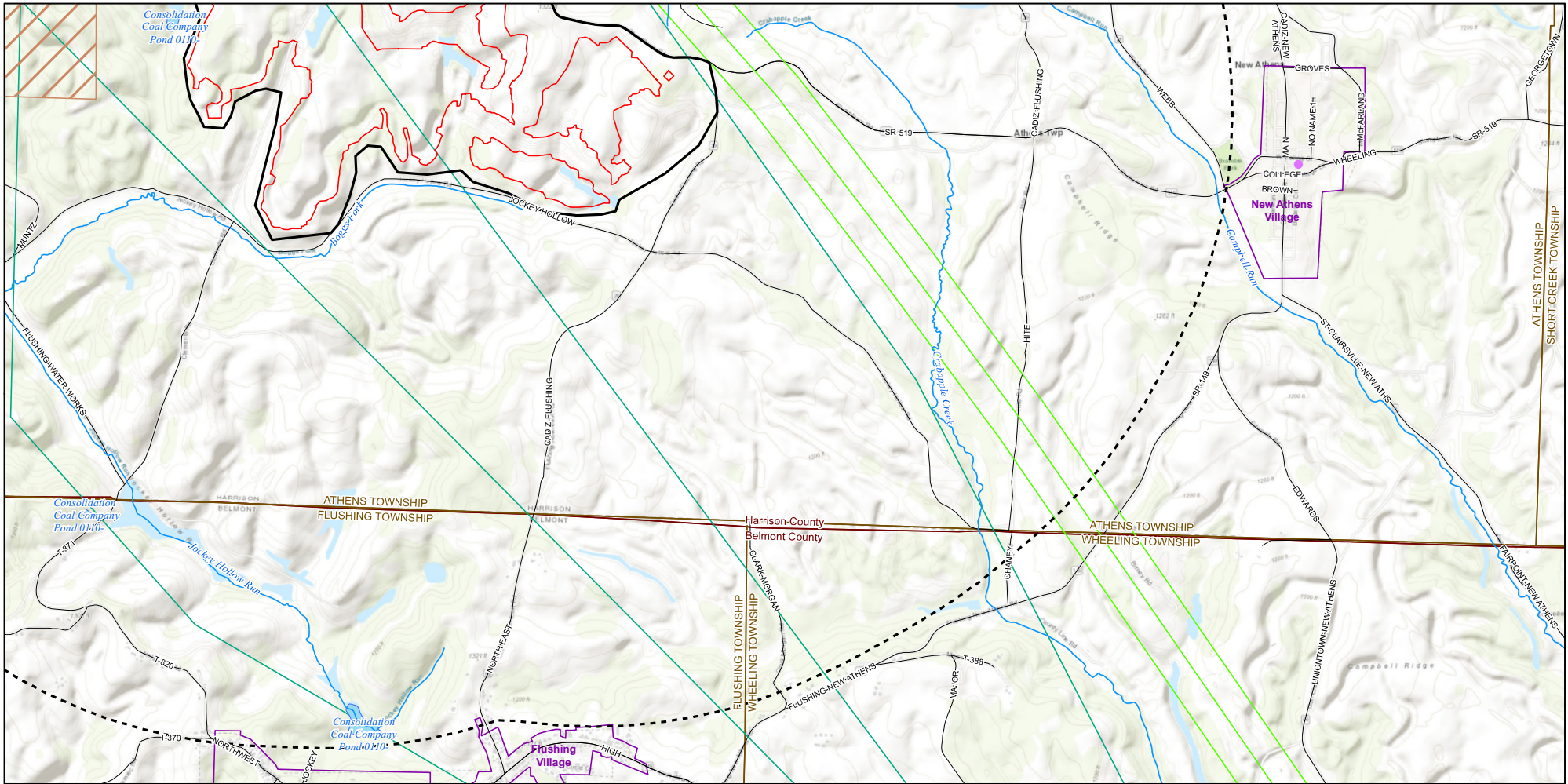
July 21, 2021



NOTTINGHAM SOLAR PROJECT
Figure 3-1
Two Mile Radius
Page 3 of 4



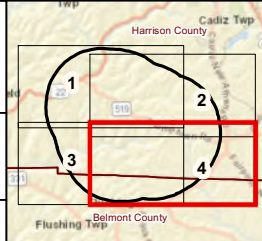
0 2,000 4,000
Feet



Sources:
Imagery (ESRI-World
Topographic Map)

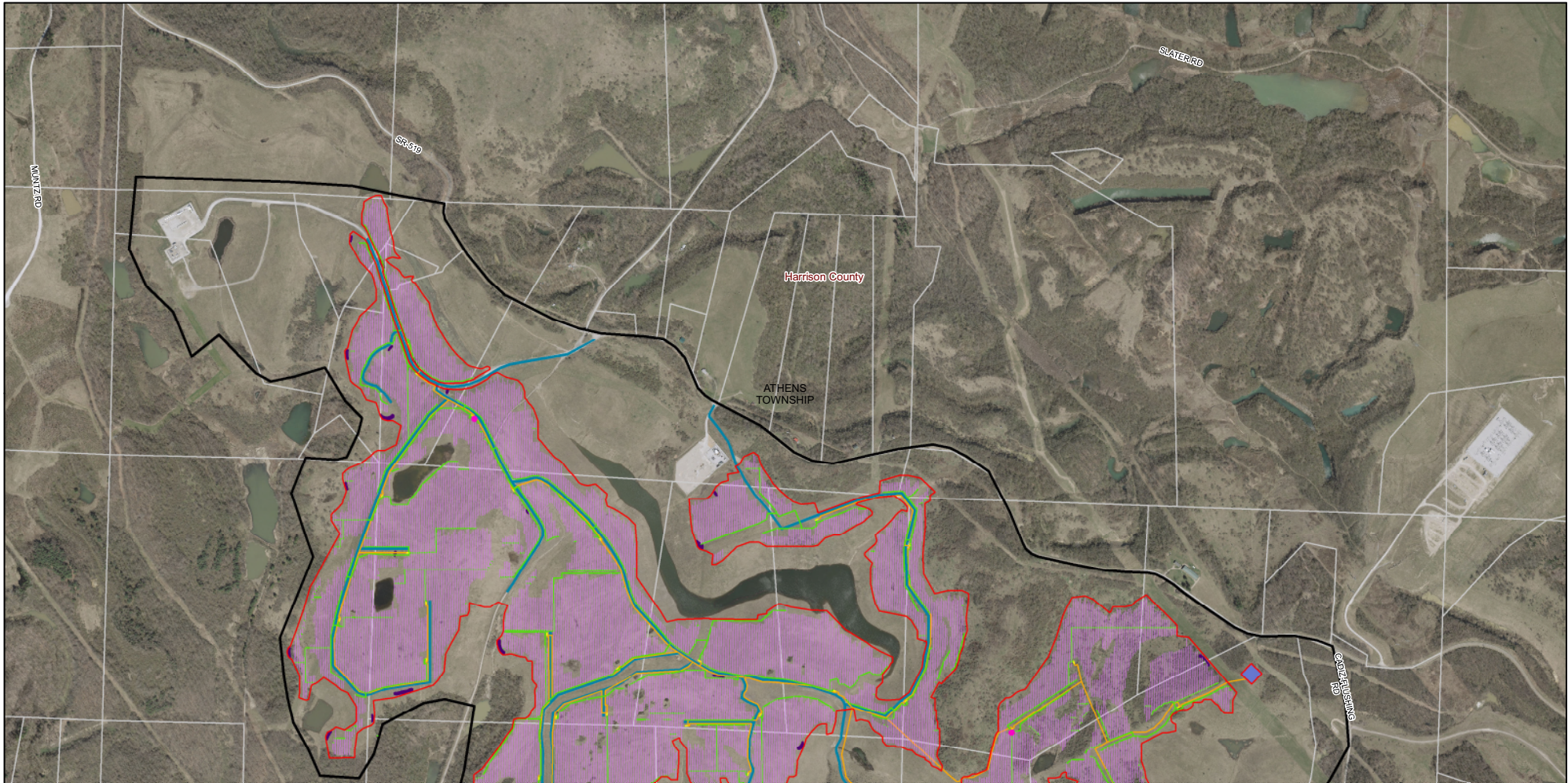
Coordinate System:
Ohio State Plane North
NAD 1983

July 21, 2021



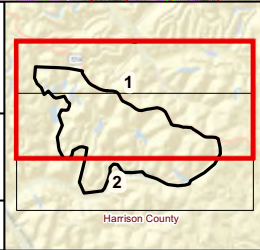
NOTTINGHAM SOLAR PROJECT
Figure 3-1
Two Mile Radius
Page 4 of 4

0 2,000 4,000 Feet



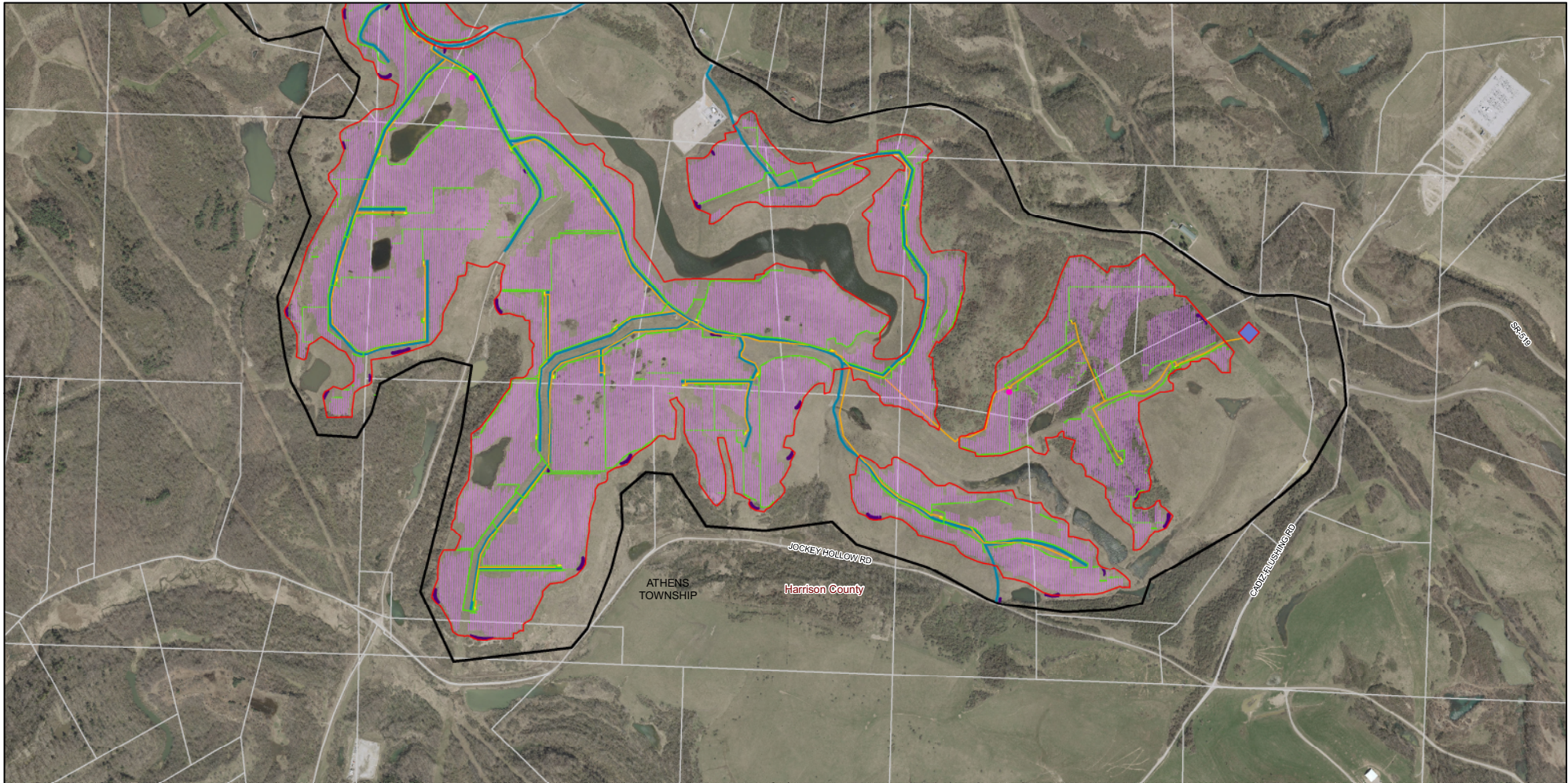
Weather Stations	Project Area
PV Module	Local Road
DC Collection	Parcel Boundary
AC Collection	Township Boundary
Roadway	County Boundary
Inverter Pad	
Substation	
Stormwater Basin	
Facility Footprint	

Sources: Imagery (2020 OGRIP)
Coordinate System: Ohio State Plane North NAD 1983
July 23, 2021



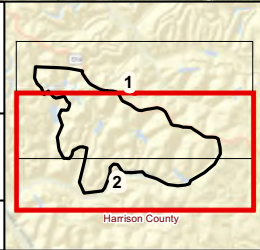
NOTTINGHAM SOLAR PROJECT
Figure 3-2
Project Site Layout
Page 1 of 2

N
0 1,000 2,000
Feet



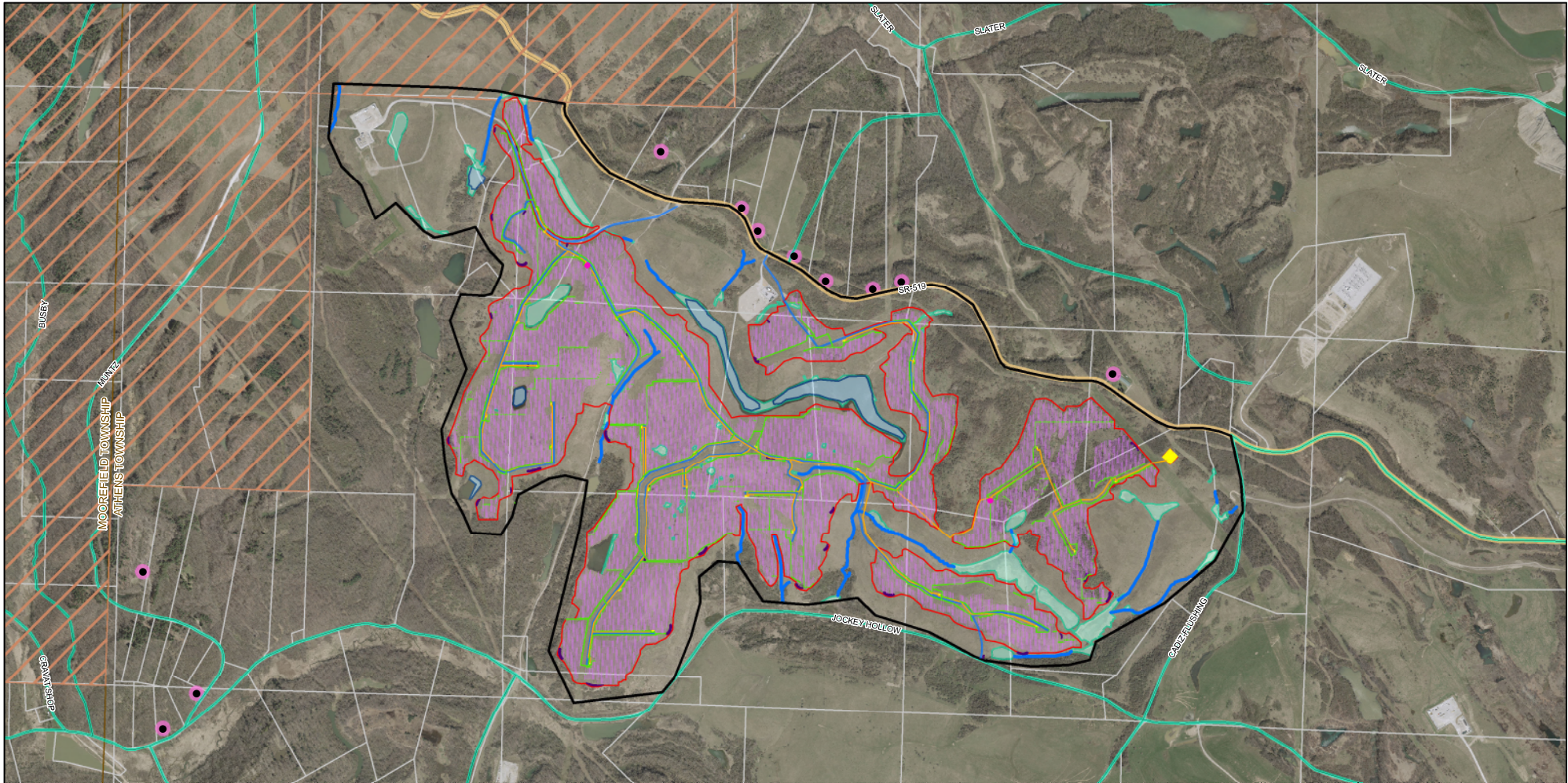
Weather Stations	Project Area
PV Module	Local Road
DC Collection	Parcel Boundary
AC Collection	Township Boundary
Roadway	County Boundary
Inverter Pad	
Substation	
Stormwater Basin	
Facility Footprint	

Sources: Imagery (2020 OGRIP)
Coordinate System: Ohio State Plane North NAD 1983
July 23, 2021



NOTTINGHAM SOLAR PROJECT
Figure 3-2
Project Site Layout
Page 2 of 2

N
0 1,000 2,000
Feet

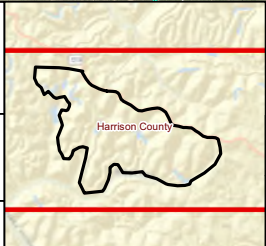


Weather Stations	Residence	Local Road
PV Module	Delineated Stream	Parcel Boundary
DC Collection	Delineated Wetland	Township Boundary
AC Collection	Delineated Pond	County Boundary
Roadway	20-Foot Setback from Public Road	
Inverter Pad	50-Foot Setback from Interstate or State Highway	
Stormwater Basin	100-Foot Setback from Residences	
Facility Footprint	ODNR Land	
Project Area		

Sources:
Imagery (2020 OGRIP)

Coordinate System:
Ohio State Plane North
NAD 1983

July 22, 2021



NOTTINGHAM SOLAR PROJECT
**Figure 4-1
Constraints Map**

N

0 1,300 2,600
Feet