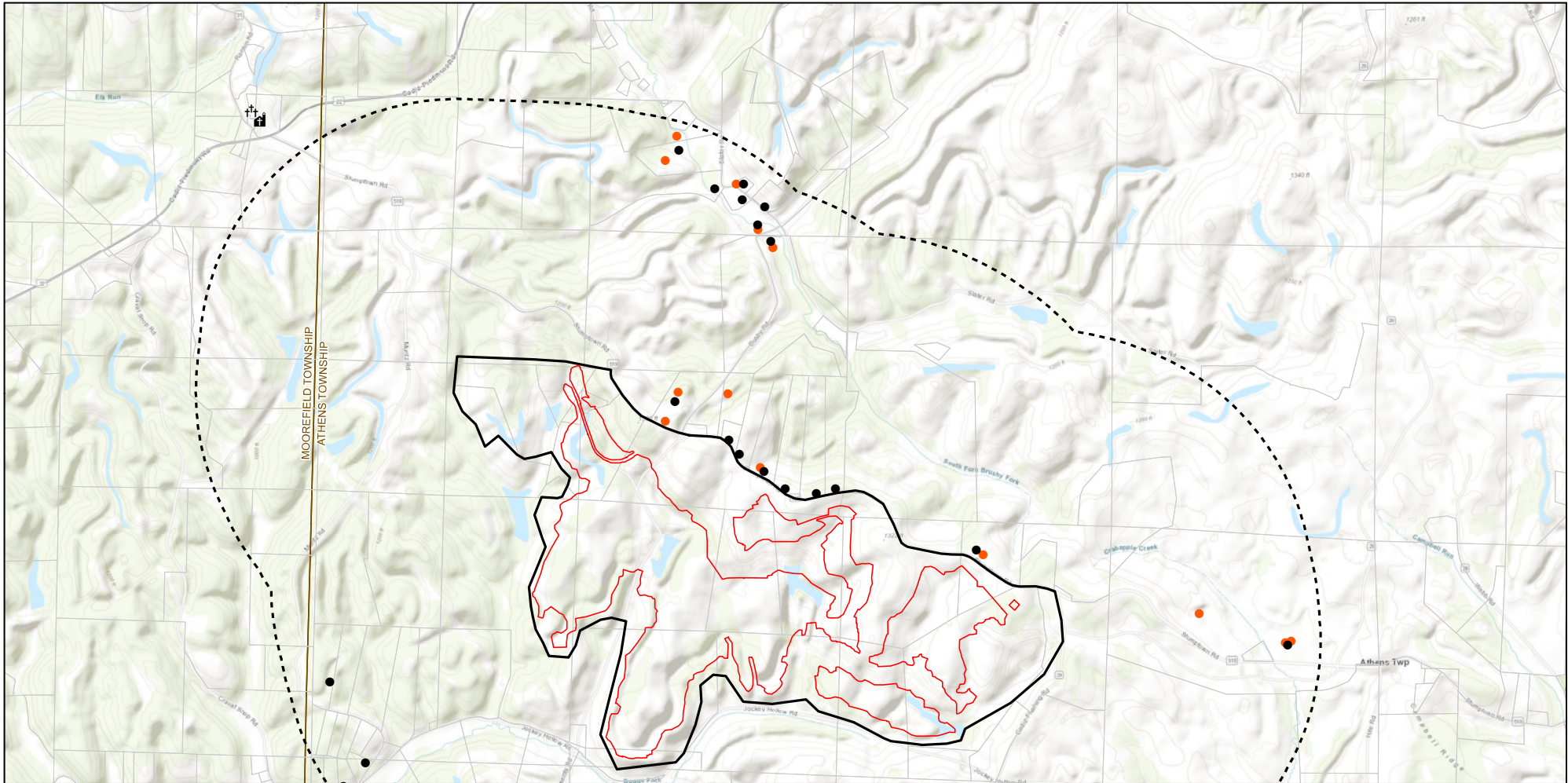


## **Figures**

- Figure 8-1 Sensitive Receptors**
- Figure 8-2 Geological and Topographic Features,  
Nottingham Solar Project**
- Figure 8-3 Ecological Communities**
- Figure 8-4 Field Survey**
- Figure 8-5 Land Use**
- Figure 8-6 Cultural and Archaeological  
(Filed Under Seal)**
- Figure 8-7 Viewshed Analysis**
- Figure 8-8 Agricultural Lands**

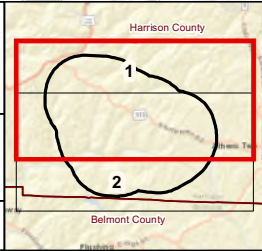


Facility Footprint	Residence	Township Boundary
Project Area	Outbuilding	County Boundary
1-Mile Radius		

Sources:  
Imagery (ESRI-World  
Topographic Map)

Coordinate System:  
Ohio State Plane North  
NAD 1983

July 21, 2021



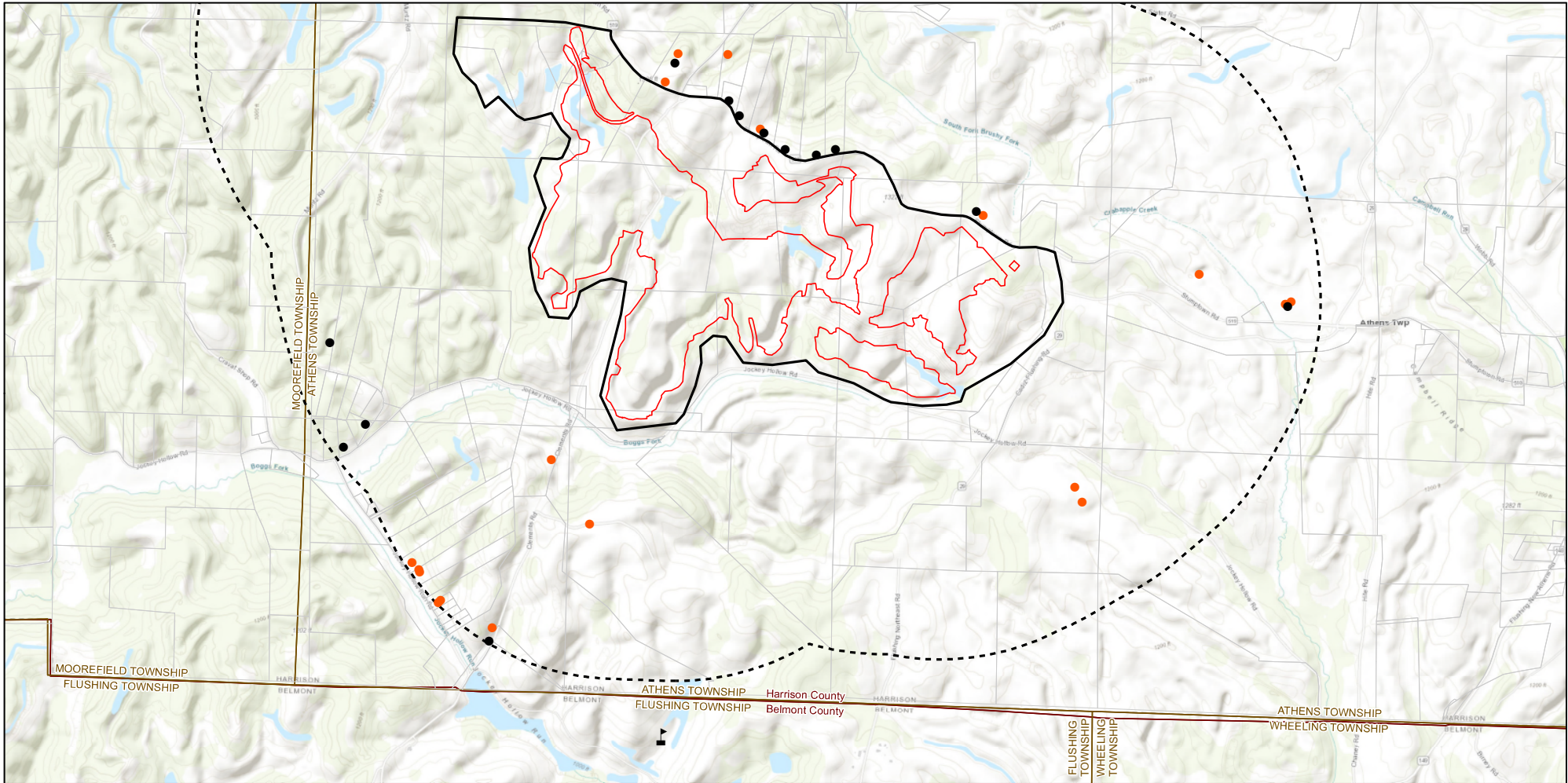
NOTTINGHAM SOLAR PROJECT

**Figure 8-1**  
**Residences**  
Page 1 of 2

N

0 2,000 4,000 Feet



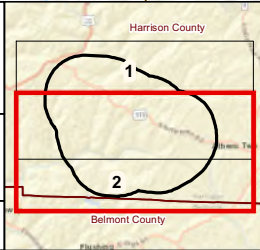


Facility Footprint	Residence	Township Boundary
Project Area	Outbuilding	County Boundary
1-Mile Radius		

Sources:  
Imagery (ESRI-World  
Topographic Map)

Coordinate System:  
Ohio State Plane North  
NAD 1983

July 21, 2021

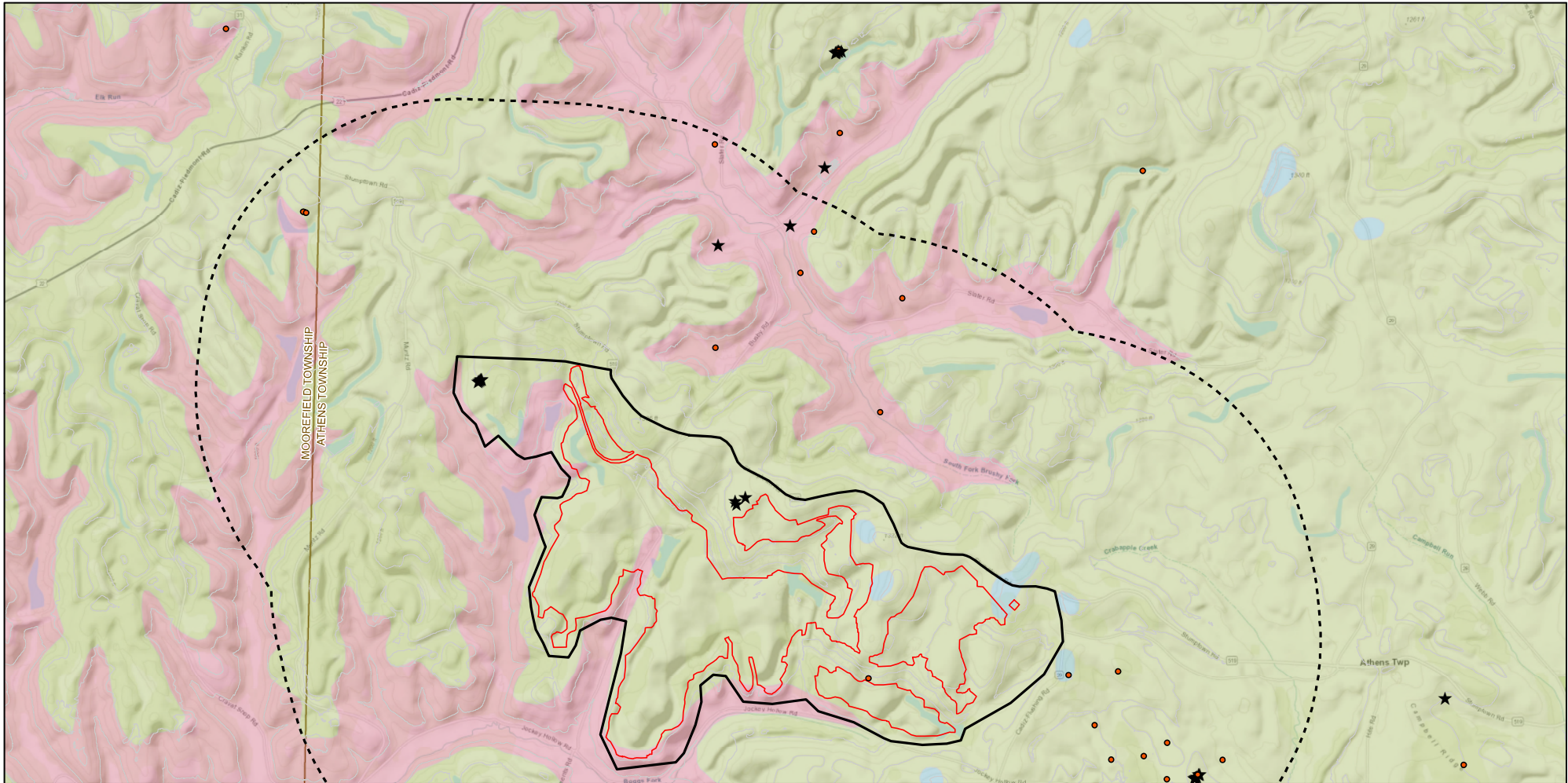


NOTTINGHAM SOLAR PROJECT  
**Figure 8-1**  
**Residences**  
Page 2 of 2

N

0 2,000 4,000 Feet



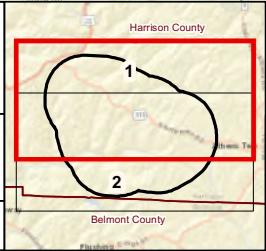


★ Oil and Gas Well	Mudstone, shale, siltstone, sandstone, and sparse thin beds of nonmarine limestone and coal	100ft Contour
● Other Well	Shale, siltstone, mudstone, sandstone, limestone, and coal	Township Boundary
▭ Facility Footprint	Shale, siltstone, sandstone, mudstone, limestone, and coal	County Boundary
▭ Project Area		
⋯ 1-Mile Radius		

Sources:  
Imagery (ESRI-World Topographic Map)

Coordinate System:  
Ohio State Plane North  
NAD 1983

July 21, 2021

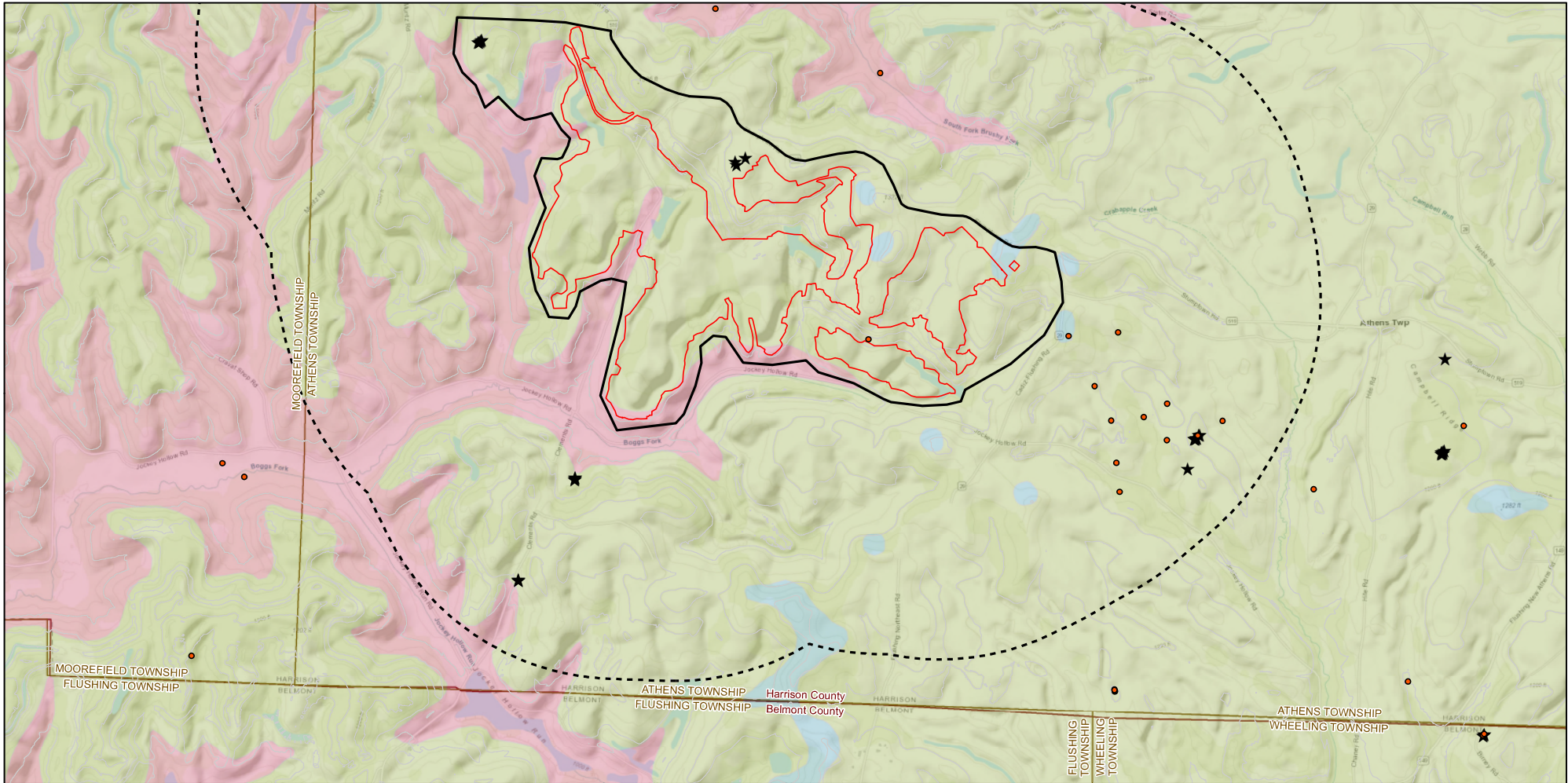


NOTTINGHAM SOLAR PROJECT  
**Figure 8-2**  
Geological and Topographic Features  
Page 1 of 2

N

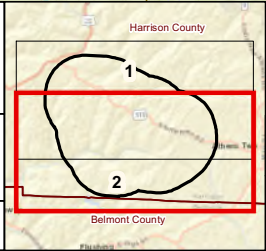
0 2,000 4,000 Feet





★ Oil and Gas Well	Mudstone, shale, siltstone, sandstone, and sparse thin beds of nonmarine limestone and coal	— 100ft Contour
● Other Well	Shale, siltstone, mudstone, sandstone, limestone, and coal	▭ Township Boundary
▭ Facility Footprint	Shale, siltstone, sandstone, mudstone, limestone, and coal	▭ County Boundary
▭ Project Area		
- - - 1-Mile Radius		

Sources: Imagery (ESRI-World Topographic Map)
Coordinate System: Ohio State Plane North NAD 1983
July 21, 2021



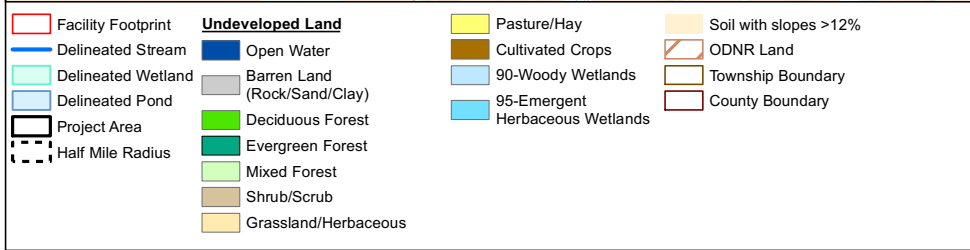
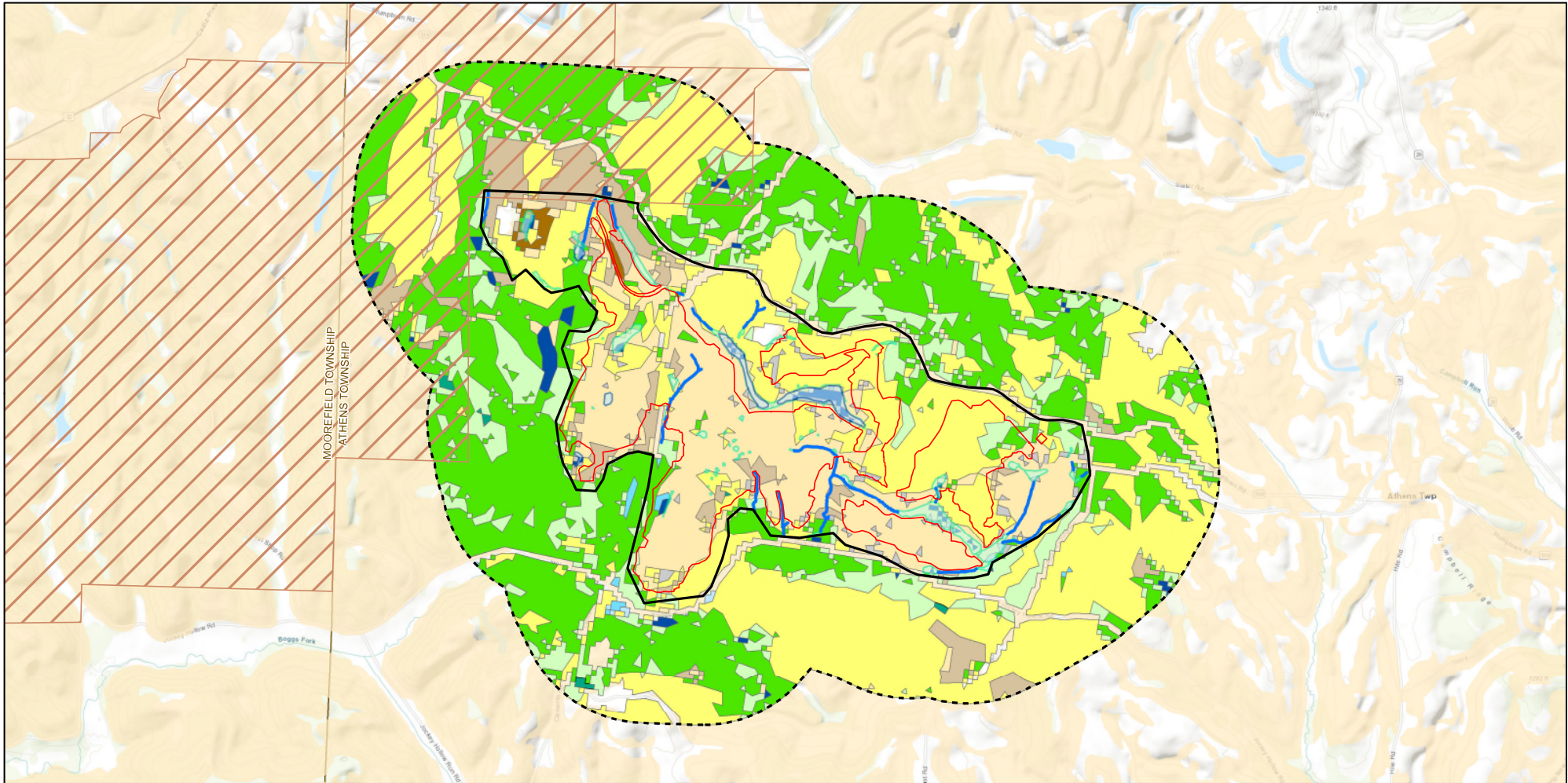
NOTTINGHAM SOLAR PROJECT  
**Figure 8-2**  
Geological and Topographic Features  
Page 2 of 2

**wsp**

N

0      2,000      4,000  
Feet

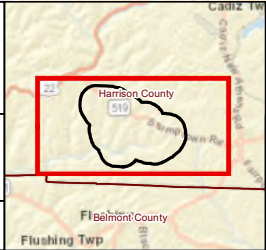




Sources:  
Imagery (ESRI-World Topographic Map)

Coordinate System:  
Ohio State Plane North NAD 1983

July 21, 2021

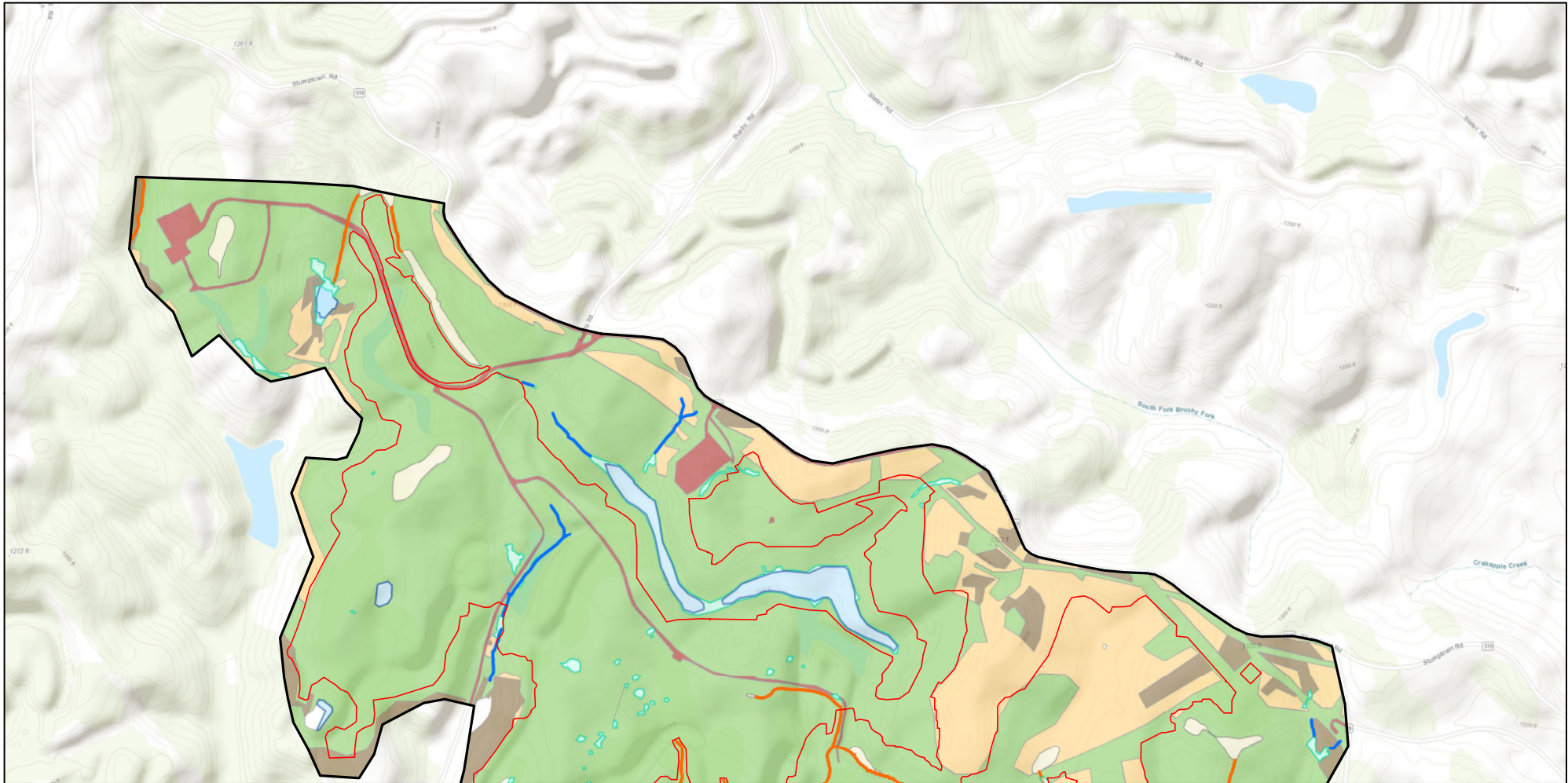


NOTTINGHAM SOLAR PROJECT  
**Figure 8-3**  
Project Ecological Communities

N

0 2,000 4,000 Feet



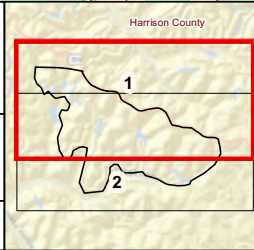


Facility Footprint	WSP Delineated Stream	Township Boundary
Project Area	WSP Delineated Wetland	County Boundary
	WSP Delineated Pond	
	Consol Delineated Stream	
	Consol Delineated Wetland	
	Developed, High Intensity	
	Grassland	
	Scrub/Shrub	
	Successional Hardwood Woodland	

Sources:  
Imagery (ESRI-World  
Topographic Map)

Coordinate System:  
Ohio State Plane North  
NAD 1983

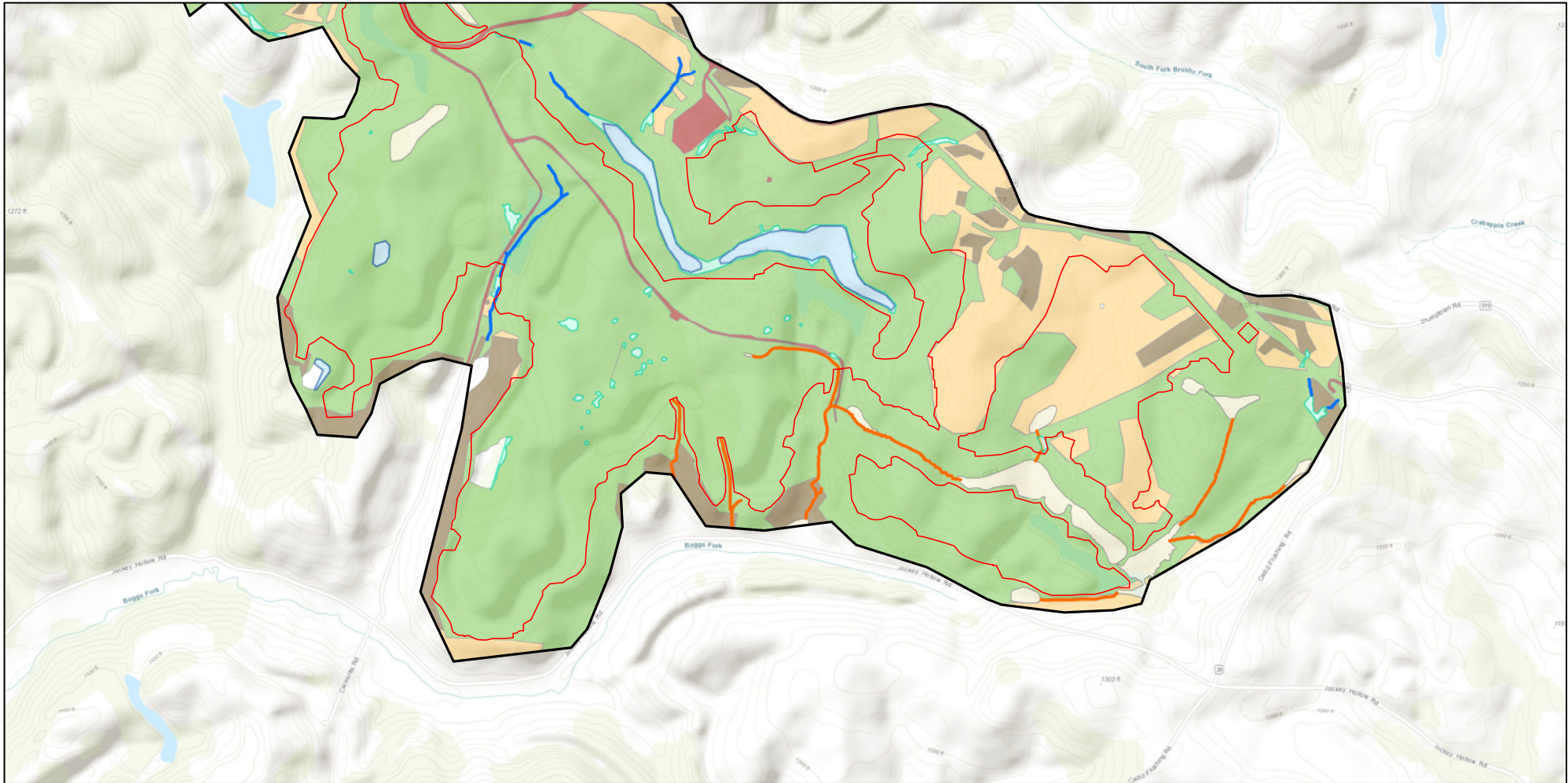
July 21, 2021



NOTTINGHAM SOLAR PROJECT  
**Figure 8-4**  
**Field Survey**  
Page 1 of 2

N

0 1,000 2,000  
Feet

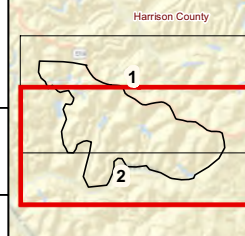


- |                    |                                |                   |
|--------------------|--------------------------------|-------------------|
| Facility Footprint | WSP Delineated Stream          | Township Boundary |
| Project Area       | WSP Delineated Wetland         | County Boundary   |
|                    | WSP Delineated Pond            |                   |
|                    | Consol Delineated Stream       |                   |
|                    | Consol Delineated Wetland      |                   |
|                    | Developed, High Intensity      |                   |
|                    | Grassland                      |                   |
|                    | Scrub/Shrub                    |                   |
|                    | Successional Hardwood Woodland |                   |

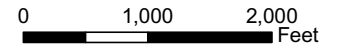
Sources:  
Imagery (ESRI-World  
Topographic Map)

Coordinate System:  
Ohio State Plane North  
NAD 1983

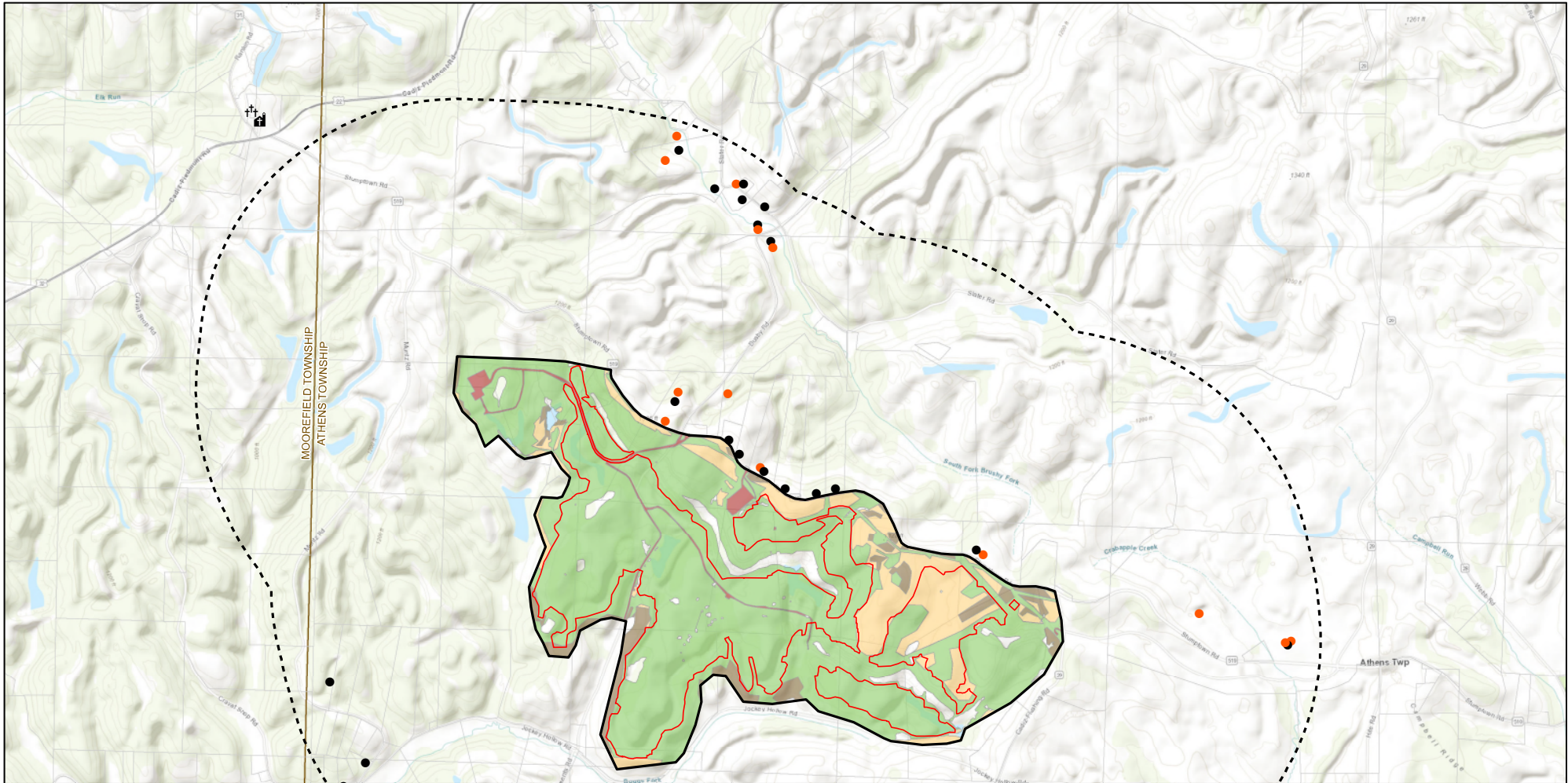
July 21, 2021



NOTTINGHAM SOLAR PROJECT  
**Figure 8-4**  
**Field Survey**  
Page 2 of 2





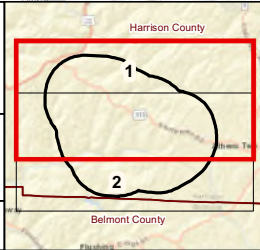


Facility Footprint	Residence	Developed, High Intensity	Township Boundary
Project Area	Outbuilding	Grassland	County Boundary
1-Mile Radius		Scrub/Shrub	
		Successional Hardwood Woodland	

Sources:  
Imagery (ESRI-World  
Topographic Map)

Coordinate System:  
Ohio State Plane North  
NAD 1983

July 21, 2021



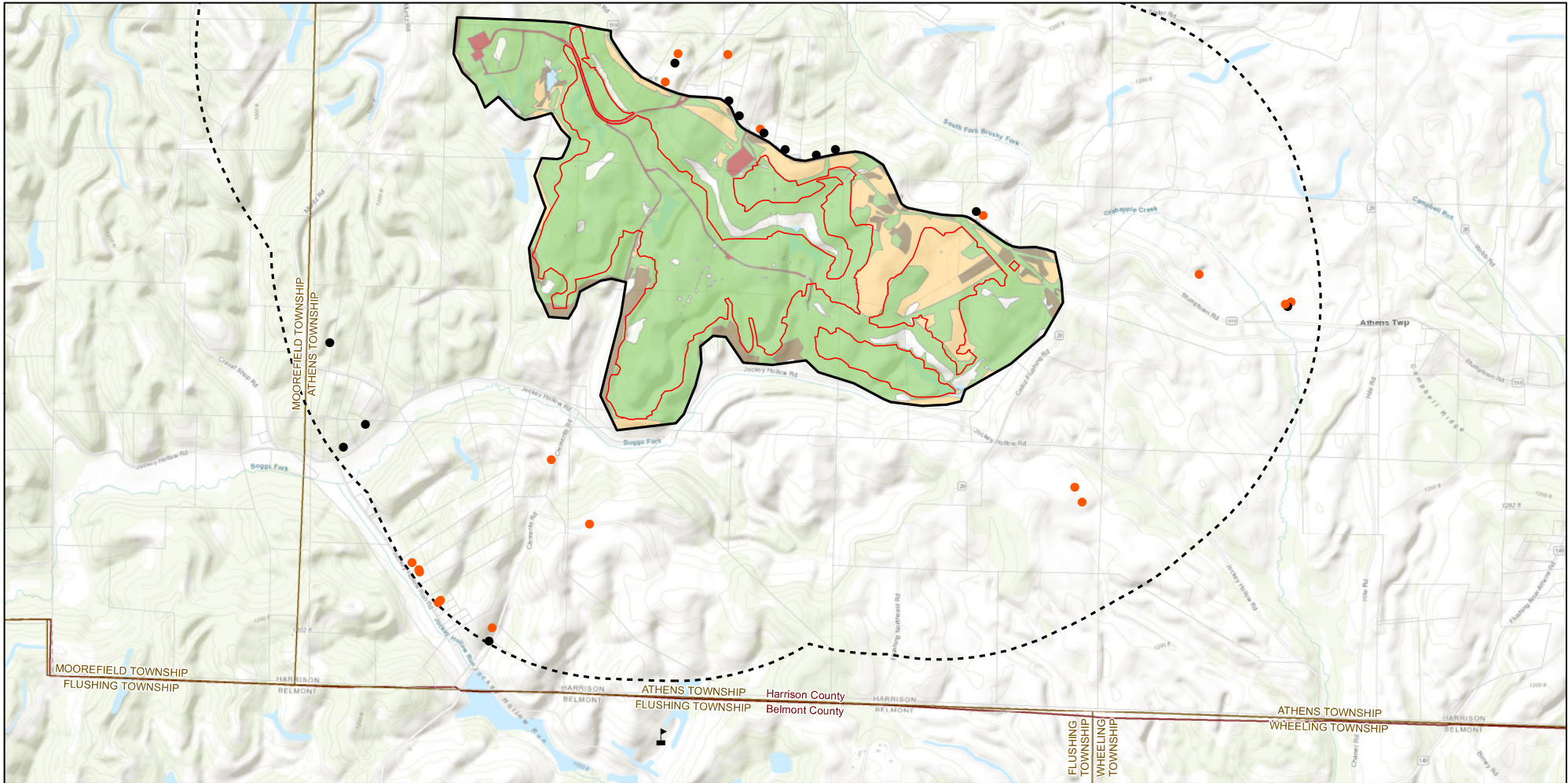
NOTTINGHAM SOLAR PROJECT

**Figure 8-5**  
**Land Use**  
Page 1 of 2

N

0 2,000 4,000 Feet



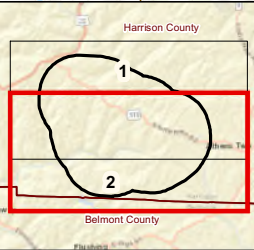


Facility Footprint	Residence	Developed, High Intensity	Township Boundary
Project Area	Outbuilding	Grassland	County Boundary
1-Mile Radius	School	Scrub/Shrub	
		Successional Hardwood Woodland	

Sources:  
Imagery (ESRI-World  
Topographic Map)

Coordinate System:  
Ohio State Plane North  
NAD 1983

July 21, 2021



NOTTINGHAM SOLAR PROJECT  
**Figure 8-5**  
**Land Use**  
Page 2 of 2

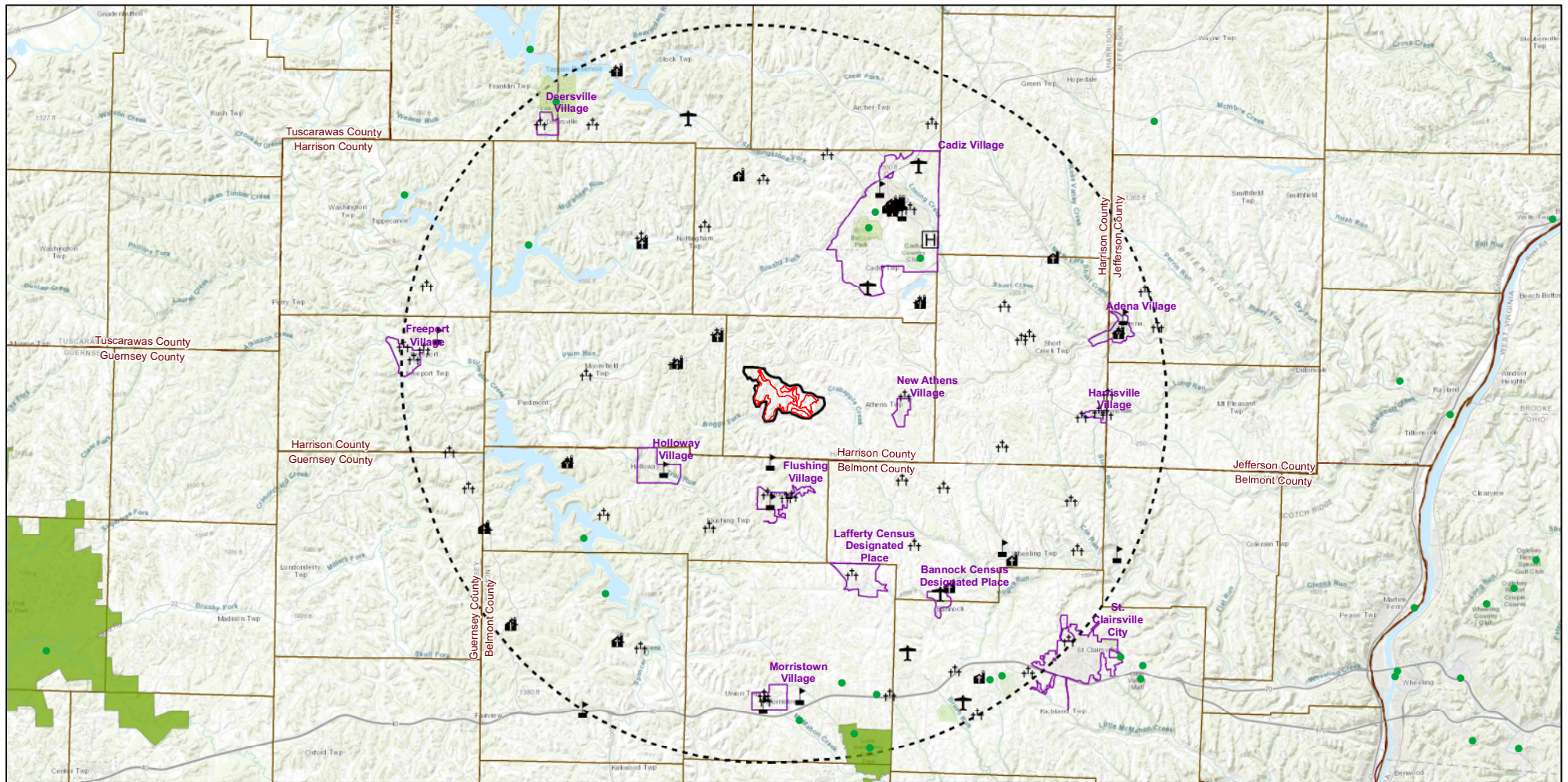
N

0 2,000 4,000 Feet



**Figure 8-6**  
**Cultural and Archaeological**

**FILED UNDER SEAL**

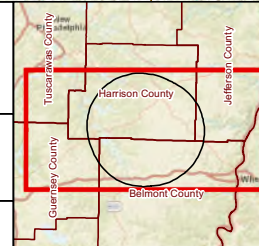


- Facility Footprint
- Project Area
- 10-Mile Radius
- Recreational Areas
- State Park or Forest
- Local Park
- ✈ Airport
- ⚰ Cemetery
- ⛪ Place of Worship
- 🏥 Hospital
- 🎓 School
- Municipal Boundary
- Township Boundary
- County Boundary

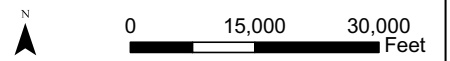
Sources:  
Imagery (ESRI World  
Topographic Map)

Coordinate System:  
Ohio State Plane North  
NAD 1983

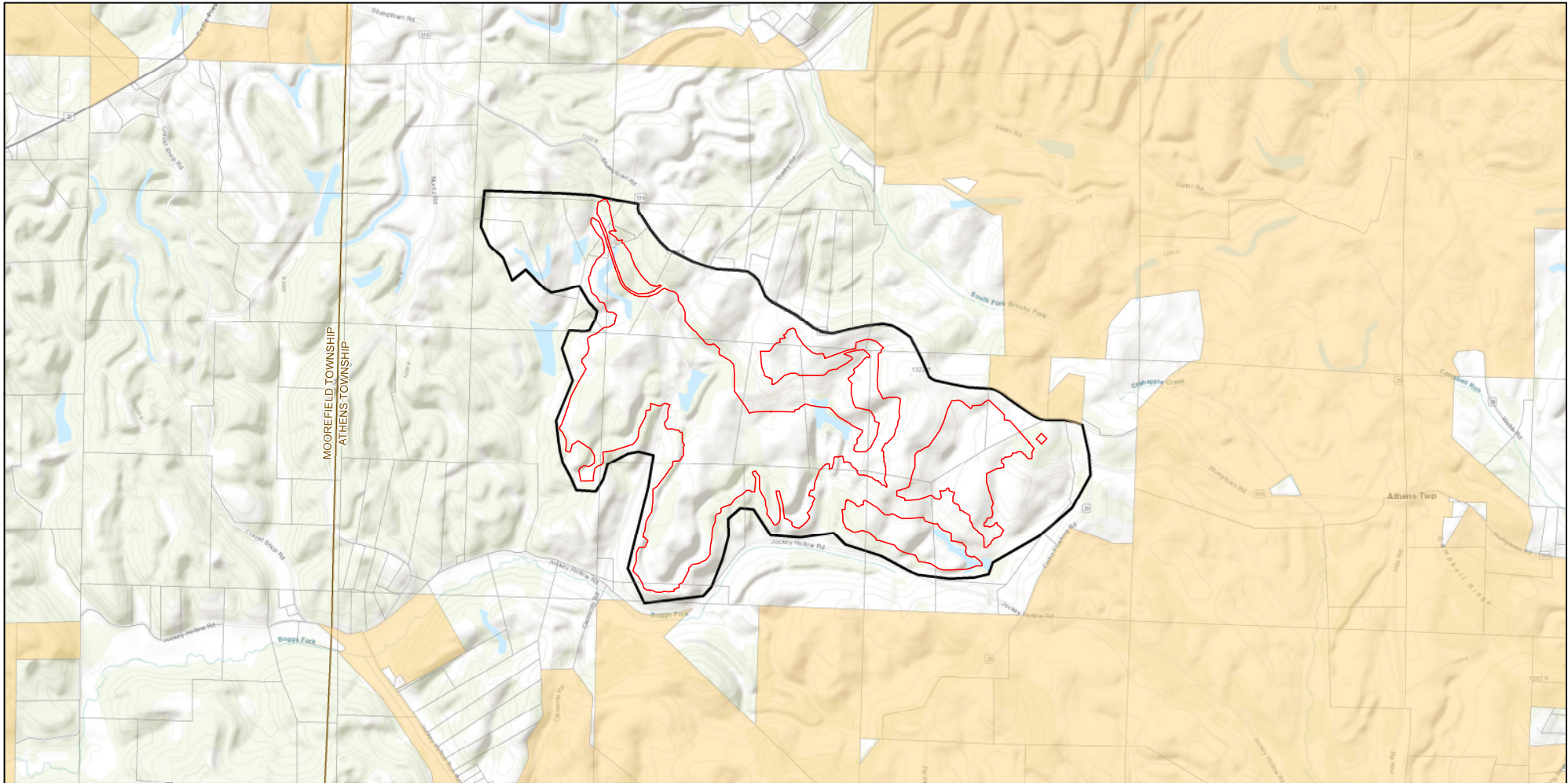
July 21, 2021



NOTTINGHAM SOLAR PROJECT  
**Figure 8-7**  
Viewshed Analysis





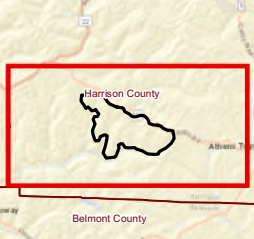


- Facility Footprint
- Project Area
- Parcel Boundary
- CAUV Parcel
- Township Boundary
- County Boundary

Sources:  
Imagery (ESRI-World  
Topographic Map)

Coordinate System:  
Ohio State Plane North  
NAD 1983

July 21, 2021



NOTTINGHAM SOLAR PROJECT  
**Figure 8-8**  
**Agricultural Lands**

