

Exhibit E

Phase IA Desktop Architectural History Review



July 23, 2021

Ms. Lori Cuervo
Director
BQ Energy Development LLC
400 Market Industrial Park, Suite 32
Wappinger Falls, NY 12590

Subject: Architectural Desktop Analysis for Nottingham Solar LLC's Nottingham Solar Site, Harrison County, Ohio

Dear Ms. Cuervo:

WSP USA Inc. (WSP) conducted a desktop analysis for Nottingham Solar LLC for the Nottingham Solar Site (Project) in Harrison County, Ohio, in compliance with the Ohio Power Siting Board (OPSB), Ohio Administrative Code Rule 4906-4-08, Health and safety, land use and ecological information. The desktop analysis was completed to understand what architectural resources may be potentially affected by the proposed Project.

Project Description

The total Project Area encompasses 1,200 acres west of New Athens, Ohio in Sections 17, 18, 23, 24, 29 and 30 of Township 9 North, Range 5 West. The Applicant is proposing to permit the entirety of the Project Area.

Based on current Project design, the facility, which is comprised of all solar components and infrastructure necessary for solar energy generation, will occupy approximately 580 acres of the Project Area.

In general, the Project will initially involve installation of temporary erosion and sediment control practices, minimal vegetation clearing, minimal grading, installation of temporary power, and construction of temporary laydown yards and access roads. Construction of the solar arrays will involve installation of steel posts and racking systems to support solar panels and direct current (DC) collection circuits. The alternating current (AC) system will be installed via open cut method and buried underground or overhead. Horizontal directional drilling may also be used when crossing environmentally sensitive features, such as wetlands or streams. Access roads will mostly follow existing access paths, but some new access roads will also be constructed within the Project. The facility will be surrounded by approximately 73,500 linear feet of fencing.

Preliminary design also includes a single Project Substation that will transform voltage from the 34.5kV collection system to the 138kV gen-tie line, which will connect to the existing AEP Nottingham substation northeast of the Project Area. The substation component will be included in a separate OPSB application.

Methodology

WSP's desktop analysis consisted of a records check/database review to determine the presence of any known cultural (architectural) resources in the study area, defined as the area within a 3.2-kilometer (2-mile) radius extending from each side of the Project Area boundaries.

The OPSB regulations require an evaluation of registered landmarks within a 10-mile radius of the Project Area; this has been completed for the purposes of the application to OPSB; however, the study area for this review has been defined as a 2-mile radius from the Project Area boundaries given the low profile of the planned solar arrays and intervening vegetation. The visual impact report prepared under separate cover for the OPSB application also looked at resources within a 10-mile radius, but focused on the geographic area within 2 miles of the Project to assess the local impact.

This desktop analysis identified resources listed in the National Register of Historic Places (NRHP), the Ohio State Historic Preservation Office (OHPO) Online Mapping System for architectural sites (Ohio History Connection [OHC] 2021), and known cemeteries shown on United States Geological Survey topographic maps and recorded by the OHPO Online Mapping System and the Ohio Genealogical Society (OGS) (2021). A bare earth viewshed of the proposal solar structures, which were assumed to be 15 feet in height, has been generated using ArcGIS to understand what properties might have visibility of the Project Area (Figure 1).

Known Architectural Resources

Cemeteries

Six previously recorded OGS cemeteries were identified within the Nottingham study area (see Figure 1; Table 1). The cemeteries have not been evaluated with respect to NRHP criteria. According to the OGS, two cemeteries are extinct with all markers and remains destroyed, two are neglected, and two are maintained (OGS 2021).

TABLE 1: KNOWN OGS CEMETERIES IN THE NOTTINGHAM STUDY AREA

OGSID	RESOURCE	NRHP STATUS	CONDITION	WITHIN VIEWSHED (Y/N)	DISTANCE TO PROJECT AREA (MILES)
14636	Boggs Cemetery	Not Evaluated	Extinct	Y	0.98
4952	McKain Cemetery	Not Evaluated	Moderate Maintenance	Y	0.28
5019	Rankin Methodist Episcopal	Not Evaluated	Highly Maintained	Y	1.26
13580	Cecil Burial-Dickerson #1	Not Evaluated	Neglected	N	1.59
4951	Malcolm	Not Evaluated	Extinct	N	1.48
4954	Barrett-Dickerson #2	Not Evaluated	Neglected	N	1.56

Source: OHC 2021

Historic Structures

In the Ohio Mapping system, six historic structures were identified in the Nottingham study area (see Figure 1; Table 2). Five resources—three houses and two farmsteads—are unevaluated. One resource, the Nottingham United Press [Presbyterian] Church, is NRHP-eligible. No NRHP-listed properties were identified in the study area. Review of Google Historical Imagery indicates that the only historic-period building in the viewshed is a small outbuilding on the south side of Stumptown Road in Range 5, Township 9, Section 17 (Parcel No. 020000280001) (Google Earth Pro 2021). All other extant buildings were constructed after 1994.

TABLE 2: KNOWN HISTORIC STRUCTURES IN THE NOTTINGHAM STUDY AREA

OHIO INVENTORY NO.	RESOURCE	NRHP STATUS	LOCATION	WITHIN VIEWSHED (Y/N)	DISTANCE TO PROJECT AREA (MILES)
HAS0002814	Rev John Walker House	Not Evaluated	SR 519 W of New Athens	Y	1.45
HAS0062414	Barricklow Farm	Not Evaluated	1450 NE of Jct Bus	Y	1.72
HAS0037913	Nottingham United Press Church	Eligible	SEC CR 42 & Rt 22	N	1.96
HAS0064014	Applegarth House	Not Evaluated	SR 519 W of New Athens	Y	1.51
BEL0067601	Miklovic Anthony Farmhouse	Not Evaluated	S of Jct TR 371 & 820	N	1.93
HAS0062614	Farmstead	Not Evaluated	Webb Rd	N	1.51

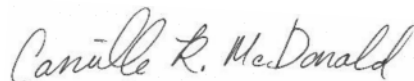
Source: OHC 2021

Summary

WSP’s desktop analysis covered the proposed Nottingham Solar Site Project Area and a study area encompassing a 2-mile buffer around the Project Area. Six OGS cemeteries are located in the study area, only three of which are in the viewshed for the Project: the McKain Cemetery, the Rankin Methodist Episcopal Cemetery, and the extinct Boggs Cemetery. The McKain Cemetery is 0.28 mile north of the Project Area but may have limited visibility of the Project because of intervening tree cover. The other two cemeteries are approximately a mile or more from the project area and will not likely have visibility of the Project because of intervening tree cover.

Six historic structures, only one of which is eligible, are located in the study area for the Project. Three of these unevaluated structures are in the viewshed, but are between 1.45 and 1.72 miles away from the Project Area and thus will not likely have visibility of the Project because of tree cover. The other three structures are in the study area, but are not in the viewshed.

Kind regards,



Camilla McDonald
 Manager, Historic Preservation

CM
 Encl.
 File: EE1009829.0002

References

- Environmental Systems Research Institute, Inc. [ESRI]
2021 World Topographic Map. ArcGIS map server accessed July 2021 via ArcMap 10.7, https://services.arcgisonline.com/ArcGIS/rest/services/World_Topo_Map/MapServer.
- Google Earth Pro
2005 Orthoimagery of the Project Area. Google Earth Imagery date June 20, 2005. Accessed April 6, 2021, <http://www.google.com/earth>.
- Ohio Genealogical Society
2021 Cemetery Search. Online Database, Ohio Genealogical Society, Bellville. Accessed March 2, 2021, <https://www.ogs.org/ohio-cemetery-search/>.
- Ohio History Connection [OHC]
2021 Online Mapping System, GIS web application. Ohio History Connection, Ohio History Center, Columbus. Accessed March 2, 2021, <https://www.ohiohistory.org/preserve/state-historic-preservation-office/mapping>.

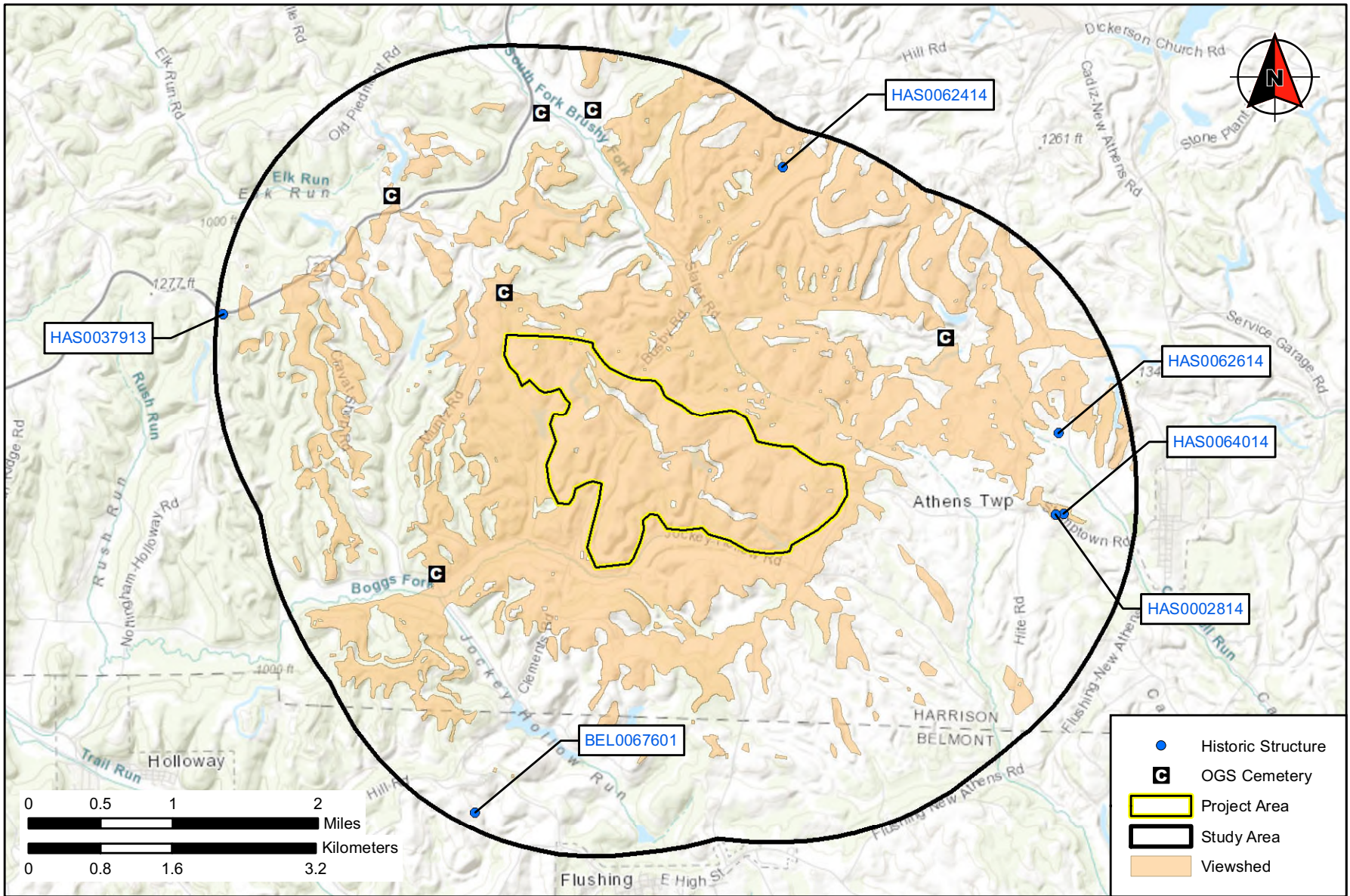


FIGURE 1: Proposed Nottingham Project Area in Harrison County, Ohio (OHC 2021; World Topographic Map 2021)