

Exhibit F

Desktop Landmark Mapping Memorandum

(Public Version)



MEMO

DATE: July 23, 2021
TO: BQ Energy Development LLC
FROM: WSP USA Inc.
SUBJECT: **OPSB Landmark Mapping for Nottingham Solar LLC's Nottingham Solar Site, Harrison County, Ohio**

WSP USA Inc. (WSP) completed Landmark Mapping of Registered Landmarks for Nottingham Solar LLC at the Nottingham Solar Site (Project) in Harrison County, Ohio in compliance with the Ohio Power Siting Board, Ohio Administrative Code Rule (OACR) 4906-4-08(D)(1).

Landmark Mapping

Under OACR 4906-4-08(D)(1), Landmarks mapping shall include:

any formally adopted land and water recreation areas, recreational trails, scenic rivers, scenic routes or byways, and registered landmarks of historic, religious, archaeological, scenic, natural, or other cultural significance within ten miles of the project area. Landmarks to be considered for purposes of paragraph (D) of this rule are those districts, sites, buildings, structures, and objects that are recognized by, registered with, or identified as eligible for registration by the national registry of natural landmarks, the state historical preservation office, or the Ohio department of natural resources.

Resources within 10 miles of the project area (Study Area), which encompasses 1,200 acres west of New Athens, Ohio in Sections 17, 18, 23, 24, 29 and 30 of Township 9 North, Range 5 West, were identified using a variety of Ohio Department of Natural Resource sites (ODNR 2016, 2017a, and 2017b), National Park Service directories, National Register of Historic Places (NRHP) listings (Stutts 2014), the Ohio State Historic Preservation Office (OHPO) Online Mapping System (Ohio History Connection [OHC] 2021), and ESRI (2018).

For this review, resources will be presented in two different sections: *Parks and Recreation* that includes adopted land and water recreation areas, recreational trails, scenic rivers, scenic routes or byways and *Registered Landmarks* of historic, religious, archaeological, scenic, natural, or other cultural significance.

Parks and Recreation

There are three parks in the Study Area (Table 1; Figure 1) (ESRI 2018). There are six Ohio Department of Natural Resources (ODNR) recognized recreation areas within the Study Area, one of which is partially inside the project boundary: Jockey Hollow Wildlife Area (Table 2; Figure 1) (ODNR 2016). Two of these recreation areas also have recreational trails: Lake Barkcamp State Park and Harrison Forest (Table 3; Figure 1). The National Road Scenic Byway is within the Study Area; but there are no scenic rivers (ODNR 2021) (Table 4; Figure 1).

Table 1. ESRI Parks

Name	Distance to Project Boundary (Mile)
Sally Buffalo Park	4.65
Roadside Park	8.28
Tappan Lake Park	9.34
Source: Esri 2018	

Table 2. ODNR Recreation Areas and Points of Interest within Study Area

Name	Distance to Project Boundary (Mile)
Jockey Hollow Wildlife Area	0
Egypt Valley Wildlife Area	3.03
Mine Safety Training Area	3.96
Harrison Forest	8.13
Lake Barkcamp State Park	9.03
Emerald Hills Nature Preserve	9.43
Belmont County, Boat Ramp	6.87
Belmont County, Boat Ramp	6.30
Guernsey County, unnamed Marina	8.11
Harrison County, unnamed Marina	8.33
Harrison County, Boat Ramp	7.64
Source: ODNR 2016, 2017a and 2017b	

Table 3. ODNR Trails within Study Area

Name	Distance to Project Boundary (Mile)
Lake Barkcamp State Park	
Orange trail	9.03
Green trail	9.09
Blue trail	9.24
Lakeview trail	9.31
Red trail	9.38
Yellow trail	9.38
Upper silver trail	9.39
Lower white trail	9.39
Woodchuck trail	9.49
Upper white trail	9.83
Lower white trail	9.83
Purple trail	9.84
Hawthorne trail	9.89
Hawk trail	9.96
Harrison Forest	
White trail	9.23

Red trail	9.35
Green trail	9.37
Blue trail	9.47
Red trail	9.49
Yellow trail	9.73
Green trail	9.73

Source: ODNR 2016, 2017a and 2017b

Table 4. Scenic Byways within Study Area

Name	Distance to Project Boundary (Mile)
National Road Scenic Byway	7.65

Source: ODNR 2021

Registered Landmarks

ESRI ArcGIS was used to map churches, cemeteries and schools (ESRI 2018). Twenty-three churches (Table 5; Figure 1) are within the Study Area, as well as fifty-two cemeteries (Table 7; Figure 1). Seven schools are within the Study Area (Table 6; Figure 1).

Three NRHP-listed historic districts and nine NRHP-listed buildings are within the Study Area (Tables 8 and 9; Figure 2). Sixty-two resources have been determined eligible by OHPO, listed as Determinations of Eligibility in the OHPO mapping system (Table 10). Five hundred and ninety-nine architectural resources have been previously surveyed but have not been evaluated with respect to NRHP criteria (Table 10; Figure 2). There are no NRHP-evaluated or previously surveyed architectural resources within the Project Area.

Two NRHP-listed archaeological sites are within the Study Area: BL0003, the Opatrny Village Site and BL0006, the Brokaw Site (Table 11, Figure 2). There are 247 additional archaeological sites within the Study Area that have not been evaluated with respect to NRHP criteria (Table 11, Figure 2). Two of the previously recorded sites, HN107 and HN108, are located in the Project Area.

No National Natural Landmarks are located within the Study Area according to the National Park Service National Natural Landmarks Directory (<https://www.nps.gov/subjects/nlandmarks/nation.htm>).

Table 5. ESRI Churches within Study Area

Name	Distance to Project Boundary (Mile)
Rankin Church	1.54
Nottingham Church	2.37
Dickerson Church	4.08
Minksville Church	5.04
Asbury Chapel	5.70
Belmont Ridge Methodist Episcopal Church	5.74
Saint Teresa Roman Catholic Church	5.91
Church of God	5.93
Church of Christ	6.01
First Presbyterian Church	6.08
Apostolic Church of God	6.12
Drummond Methodist Episcopal Church	6.14
Simpson African Methodist Episcopal Church	6.19

Name	Distance to Project Boundary (Mile)
Gordon Chapel	6.38
Fairpoint Mennonite Church	7.19
Salem Church	7.73
Springdale Church	7.99
Oak Grove Methodist Episcopal Church	8.72
Adena Presbyterian Church	8.94
East Richland Evangelical Friends Church	9.03
Sewellsville Methodist Episcopal Church	9.51
Pleasant Valley Church	9.66
Richland Church	9.99

Source: ESRI 2018

Table 6. ESRI Schools within Study Area

Name	Distance to Project Boundary (Mile)
Flushing Elementary School	2.36
Cadiz High School	5.93
Cadiz Westgate Elementary School	6.29
Union High School	8.09
Morristown Elementary School	8.30
Adena Elementary School	9.21
Lakeland High School	9.40

Source: ESRI 2018

Table 7. ESRI Cemeteries within Study Area

Name	Distance to Project Boundary (Mile)
Rankin Methodist Episcopal Cemetery	1.54
Flushing Area Cemetery	2.13
Flushing City Cemetery	2.29
Flushing Township Cemetery	2.29
Nottingham Cemetery	2.45
Longview Cemetery	2.48
Crabapple Cemetery	3.24
Rockhill Cemetery	3.51
Dickerson Cemetery	4.07
Unity Cemetery	4.38
Lees Run Cemetery	4.44
Saint Mary's Cemetery	4.73
Old Uniontown Cemetery	4.81
Moorefield Methodist Episcopal Cemetery	4.95
Minksville Cemetery	5.16
Stillwater Cemetery	5.41
Stiers Cemetery	5.48
Hines Cemetery	5.56
Belmont Ridge Cemetery	5.75

Name	Distance to Project Boundary (Mile)
Old Cadiz Cemetery	5.86
West Grove Cemetery	6.07
Union Cemetery	6.14
Short Creek Cemetery	6.15
Furbay Cemetery	6.44
Infirmiry Cemetery	6.56
Old Egypt Cemetery	7.56
Olive Branch Cemetery	7.68
Salem Cemetery	7.75
Wheeling Valley Cemetery	7.90
Union Cemetery	8.01
Alley Cemetery	8.15
Morristown First Cemetery	8.16
Friends Meeting House Cemetery	8.42
Plainfield Cemetery	8.43
Wilson Cemetery	8.43
Infirmiry Cemetery	8.51
Deersville Cemetery	8.63
Mattern Cemetery	8.67
Oak Grove Cemetery	8.67
Coleman Cemetery	8.71
Quaker Cemetery	8.72
Adena Presbyterian Cemetery	8.93
Smyrna Methodist Episcopal Cemetery	9.03
Sewellsville Cemetery	9.49
Deersville Methodist Episcopal Cemetery	9.57
Pleasant Valley Cemetery	9.66
Greenmont Cemetery	9.75
Butcher Cemetery	9.78
East Richland Cemetery	9.94
Union Cemetery	9.97
Jenkins Cemetery	10.00
Freeport Presbyterian Cemetery	10.00

Source: ESRI 2018

Table 8. NRHP Historic Districts within Study Area

Name	Distance to Project Boundary (Mile)
Morristown Historic District	8.00
Deersville Historic District	8.98
George-Caldwell-Grum Farm	7.08
Opatrny Village Site (BL0003)*	N/A

Note: This district is an archaeological historic district (see Table 7).
Source: OHC 2021

Table 9. Individually Listed NRHP Resources within Study Area

Name	Distance to Project Boundary (Mile)
Ourant's School	6.25
Hamilton-Ickes House	9.46
Harrison County Courthouse	5.98
Franklin College Building No. 5	2.19
Great Western Schoolhouse	8.35
Reaves, John, House	9.83
Bernhard, Ann E Lewis, House	9.00
Harrison National Bank	6.02
Brick Tavern House	8.23

Source: OHC 2021

Table 10. Previously Surveyed Structures within Study Area

Ohio Inventory No.	Name	NRHP Status
BEL0008907	Clark Farmhouse	Not evaluated
BEL0009007	Kinder House	Not evaluated
BEL0022606	Morristown Christian Church	Not evaluated
BEL0022706	Morristown Methodist Church	Not evaluated
BEL0022806	Morristown Presbyterian Church	Not evaluated
BEL0022906	Margaret Dankworth House	Not evaluated
BEL0023006	John Nelson Shepherd House	Not evaluated
BEL0023106	Arthur Henderson House	Not evaluated
BEL0023206	John Martinko House	Not evaluated
BEL0023306	Town Hall	Not evaluated
BEL0023406	Willa Wilhelm House	Not evaluated
BEL0023506	Doyle Groves House	Not evaluated
BEL0023606	Ephraim Gaston House	Not evaluated
BEL0023706	Cecil Akers House	Not evaluated
BEL0023806	Harold Harris House	Not evaluated
BEL0023906	Milner House	Not evaluated
BEL0024006	Milner Building	Not evaluated
BEL0024106	Milner House	Not evaluated
BEL0024206	Robert Swann House	Not evaluated
BEL0024406	John Groves Building	Not evaluated
BEL0024506	John Groves Building	Not evaluated
BEL0024606	John Groves House	Not evaluated
BEL0024706	Russell Van Fossen House	Not evaluated
BEL0024806	Robert Swann House	Not evaluated
BEL0024906	Margaret Dankworth House	Not evaluated
BEL0025006	Jesse Miller Store	Not evaluated
BEL0025106	Wilbern Gunn House	Not evaluated
BEL0025206	JD Milner House	Not evaluated
BEL0025306	Henley McFarland House	Not evaluated
BEL0025406	George Taylor House	Not evaluated
BEL0025506	Orie J Yearly House	Not evaluated
BEL0025606	Virginia McWilliams House	Not evaluated

Ohio Inventory No.	Name	NRHP Status
BEL0025706	C Hoops House	Not evaluated
BEL0025806	M Dankworth House	Not evaluated
BEL0025906	M Dankworth House	Not evaluated
BEL0026006	Joe Yearly House	Not evaluated
BEL0026106	Black Horse Inn	Not evaluated
BEL0026206	Ernest Charlton House	Not evaluated
BEL0026306	M Dankworth Building	Not evaluated
BEL0026406	Leland Wilson House	Not evaluated
BEL0026506	Leland Wilson House	Not evaluated
BEL0026606	Leland Wilson House	Not evaluated
BEL0026706	Helen Barrow House	Not evaluated
BEL0026806	Brenda Snyder House	Not evaluated
BEL0026906	Harry Sipe House	Not evaluated
BEL0027006	Kelly-Kemp Funeral Home	Not evaluated
BEL0027106	Paul Gordon House	Not evaluated
BEL0027206	Morristown Post Office	Not evaluated
BEL0027306	Robert McKendree House	Not evaluated
BEL0027406	Jessie Milner House	Not evaluated
BEL0027506	Floyd Boyd House	Not evaluated
BEL0027606	William Gibeaut House	Not evaluated
BEL0027706	Howard Wilhelm House	Not evaluated
BEL0027806	Ayers Seger House	Not evaluated
BEL0027906	William Gibeaut House	Not evaluated
BEL0028006	Morristown State Bank Building	Not evaluated
BEL0028106	Ted Williams House	Not evaluated
BEL0028206	Helen Barrow House	Not evaluated
BEL0028306	Elsie Major House	Not evaluated
BEL0028406	Paul Jordan House	Not evaluated
BEL0028506	Yankee Doodle Antiques Shop	Not evaluated
BEL0028606	Meley Lukich House	Not evaluated
BEL0028706	Lewis Carruth House	Not evaluated
BEL0028806	Jeffery Lynn House	Not evaluated
BEL0028906	Mildred Fulton House	Not evaluated
BEL0029006	Andrew Borash House	Not evaluated
BEL0029601	Jacob Holloway House 3	Not evaluated
BEL0029701	Jacob Holloway House 2	Not evaluated
BEL0029802	Road/Vehicle Related	Not evaluated
BEL0029901	Lewis Farm	Not evaluated
BEL0030001	William Palmer House 1	Not evaluated
BEL0030602	John W Smith House	Not evaluated
BEL0030702	Eli Nichols House	Not evaluated
BEL0030802	Holloway House	Not evaluated
BEL0034207	Robinson Tavern	Not evaluated
BEL0052802	Roland Henderson House	Not evaluated
BEL0053907	Single Dwelling	Not evaluated
BEL0054307	Michener House	Not evaluated
BEL0059701	Bedway House	Not evaluated
BEL0059801	Bedway Barn	Not evaluated

Ohio Inventory No.	Name	NRHP Status
BEL0059903	Herman Farmhouse	Not evaluated
BEL0060006	Shutway House	Not evaluated
BEL0060106	Shutway Farm	Not evaluated
BEL0060206	Shutway Log Barn	Not evaluated
BEL0060606	Lafferty Tipple	Not evaluated
BEL0060807	Kirke B Porterfield Ruins	Not evaluated
BEL0060907	Kirke B Porterfield Barn	Not evaluated
BEL0061007	Kirke B Porterfield Barn	Not evaluated
BEL0061107	Kirke B Porterfield Springhouse	Not evaluated
BEL0061307	Kirke B Porterfield	Not evaluated
BEL0061407	Kirke B Porterfield	Not evaluated
BEL0061507	Kirke B Porterfield Ruins	Not evaluated
BEL0062701	Piedmont Lake Entries	Not evaluated
BEL0067207	Courthouse Annex II	Eligible
BEL0067306	Lafferty Shaft	Not evaluated
BEL0067601	Miklovic Anthony Farmhouse	Not evaluated
BEL0067802	Crabapple Dam	Not evaluated
BEL0067902	Woc House	Not evaluated
BEL0068004	Bridge, Wheeling Creek	Not evaluated
BEL0068102	Schlatt House	Not evaluated
BEL0068202	Slago House	Not evaluated
BEL0068302	Kurucz & Vetula	Not evaluated
BEL0068402	Dillion House	Not evaluated
BEL0068502	Company Housing	Not evaluated
BEL0068604	RR Bridge, Pogue Rd	Not evaluated
BEL0068704	RR Bridge, Wheeling Creek	Not evaluated
BEL0068802	Company Housing	Not evaluated
BEL0068902	Company Housing	Not evaluated
BEL0069002	Company Housing	Not evaluated
BEL0069102	Company Housing	Not evaluated
BEL0069202	Company Housing	Not evaluated
BEL0069302	Crabapple Water Tank	Not evaluated
BEL0069402	Crabapple Tipple	Not evaluated
BEL0069502	Company Housing	Not evaluated
BEL0069607	Ranch House w/ old Foundation	Not evaluated
BEL0070001	Storage	Not evaluated
BEL0070101	Abandoned Mine	Not evaluated
BEL0070207	Richard Stuart House	Not evaluated
BEL0070307	Paul & Shirley Roscoe House	Not evaluated
BEL0070407	The Body Shop	Not evaluated
BEL0070507	Office, 68011 Vineyard Road	Eligible
BEL0071807	Oakview Admin Building	Eligible
BEL0093307	Nat'l Rd Mile Marker 145	Eligible
BEL0093507	Knoll Property	Not evaluated
BEL0093707	Twin Pines Motel	Eligible
BEL0093907	National Road Mile Marker 143	Eligible
BEL0094107	National Road Remnant	Not evaluated
BEL0094307	Napa Auto Parts Driveway	Not evaluated

Ohio Inventory No.	Name	NRHP Status
BEL0094507	Nat'l Rd Mile Marker 142	Not evaluated
BEL0094707	US 40 Concrete Culvert	Not evaluated
BEL0094907	Bryan Electric	Not evaluated
BEL0095107	Gasber's "Fine Day"	Not evaluated
BEL0095307	Nat'l Rd Mile Marker 144	Not evaluated
BEL0095507	US 40 Concrete Culvert	Not evaluated
BEL0095707	St Clair Storage Apartments	Not evaluated
BEL0095907	US 40 Concrete Culvert	Not evaluated
BEL0096107	US 40 Concrete Culvert	Not evaluated
BEL0096507	US 40 Concrete Culvert	Not evaluated
BEL0096707	National Road Bridge over Tributary of Wheeling Creek	Eligible
BEL0096907	Belmont Co Engineering Department	Not evaluated
BEL0097107	US 40 Concrete Culvert	Not evaluated
BEL0097307	Pyles Property	Not evaluated
BEL0097506	Marling Property	Not evaluated
BEL0097706	Nat'l Rd Mile Marker 147	Not evaluated
BEL0097906	National Road Remnant	Not evaluated
BEL0098106	Nat'l Rd Mile Marker 148	Not evaluated
BEL0098306	TR 814 (Old US 40)	Not evaluated
BEL0098906	Pick's Place	Not evaluated
BEL0099106	National Road Remnant	Not evaluated
BEL0099306	Nat'l Rd Mile Marker 149	Not evaluated
BEL0099506	Nat'l Rd Mile Marker 139	Not evaluated
BEL0099706	Belmont County Garage	Not evaluated
BEL0099906	Nat'l Rd Mile Marker 146	Not evaluated
BEL0100106	Tuchosck Property	Not evaluated
BEL0100306	McDowell Residence	Not evaluated
BEL0100506	Talbott's Tourist Camp - Ruins	Not evaluated
BEL0100605	T H 807 (National Road) Concrete Culvert	Not evaluated
BEL0100706	National Road Remnant	Not evaluated
BEL0100805	National Road Remnant	Not evaluated
BEL0100906	National Road Remnant	Not evaluated
BEL0101005	Belmont County Road 102	Not evaluated
BEL0101206	Nat'l Rd Mile Marker 152	Eligible
BEL0101305	Wesley's Garage	Not evaluated
BEL0101406	National Road Remnant	Eligible
BEL0101505	Fisher Antiques	Not evaluated
BEL0101606	Brown Property	Not evaluated
BEL0101806	Town Hill Road (TR 401)	Eligible
BEL0101905	Hughes Property	Not evaluated
BEL0102006	Shepherd Property	Not evaluated
BEL0102105	National Road Inn	Not evaluated
BEL0102206	Shepherd Residence	Not evaluated
BEL0102305	T H 807 (National Road) Concrete Culvert	Not evaluated
BEL0102406	Nat'l Rd Mile Marker 151	Eligible
BEL0102606	National Road Remnant	Eligible

Ohio Inventory No.	Name	NRHP Status
BEL0102705	T H 807 (National Road) Concrete Culvert	Not evaluated
BEL0102806	Nat'l Rd Mile Marker 150	Not evaluated
BEL0103006	Ramsay's Garage	Not evaluated
BEL0103206	Ramsay's Restaurant & Bar	Not evaluated
BEL0103406	40 Deli	Not evaluated
BEL0103606	Jessie Lynn Property	Not evaluated
BEL0103805	Nat'l Rd Lady Bend Hill Bridge	Not evaluated
BEL0104107	McGraw House	Eligible
BEL0104407	Thompson Cabin	Not evaluated
BEL0112401	Horton Howard House	Not evaluated
BEL0112501	Single Dwelling	Not evaluated
BEL0112601	Eli Nichols Property	Not evaluated
BEL0112701	Horton Howard House	Not evaluated
BEL0113102	Lydia Mine Hanna Coal Co.	Not evaluated
BEL0115107	Taplin Mine	Not evaluated
BEL0134207	Zajack Farm	Not evaluated
BEL0134302	Clarkson Coal Mine Complex	Eligible
BEL0135402	B&O Railroad Bridge	Not evaluated
BEL0136603	Parish Residence	Not evaluated
BEL0136702	Bridge in Wheeling Creek Valley	Eligible
BEL0136802	Culvert located in the Wheeling Creek Valley	Eligible
BEL0136902	Building	Eligible
BEL0139807	Colliery #1, Clarkson Coal Mining Company	Not evaluated
BEL0139902	Stone House	Not evaluated
BEL0142206	Ohio American Energy, Inc. Property	Not evaluated
BEL0142306	Charles Mamula House	Not evaluated
BEL0142406	Ohio River Collieries Co. Property	Not evaluated
BEL0148106	Shugert Property	Not evaluated
BEL0148206	House, 39095 National Road	Not evaluated
BEL0148306	Taylor House	Not evaluated
BEL0148406	Swiger House	Eligible
BEL0151106	James Lochary Property	Not evaluated
BEL0151206	Sayre Property	Not evaluated
BEL0151407	Stewart Property	Not evaluated
BEL0151707	Nagy Cattle Barn	Not evaluated
BEL0151807	Jeffery Nagy Property	Not evaluated
BEL0151907	Wayne Rinkes Property	Not evaluated
BEL0153705	Stiles Property	Not evaluated
BEL0159906	Silos, Smith Rd	Not evaluated
BEL0169606	Log Building, Wilson Road (Demolished)	Not evaluated
BEL0170102	House, Lafferty Road	Not evaluated
BEL0170202	Abandoned Railroad, off Lafferty Road	Not evaluated
BEL0171506	Noble Taylor House	Not evaluated
BEL0171606	Taggart Farmstead	Not evaluated
BEL0169803	Maynard Commercial Building	Eligible
BEL0172906	Dunlap residence	Not evaluated

Ohio Inventory No.	Name	NRHP Status
BEL0173006	Conrad residence	Not evaluated
BEL0173106	Bennoc Inc. building	Not evaluated
BEL0173206	Barr Residence	Not evaluated
BEL0173306	Jasper residence	Not evaluated
BEL0173406	Taylor barn	Not evaluated
BEL0173506	Brown Property	Not evaluated
BEL0173606	Tollgate Holdings LLC Property - Barn	Not evaluated
<i>BEL0180307</i>	<i>Jason B. Balcar House</i>	<i>Eligible</i>
<i>BEL9976000</i>	<i>WPAW038/Jamboree in the Hills</i>	<i>Eligible</i>
HAS0000116	Harrison County Courthouse	Not evaluated
HAS0000212	Council House	Not evaluated
HAS0000311	John Mehollin House	Not evaluated
HAS0000516	Thomas Lee House	Not evaluated
HAS0000616	Judge Thomas Lee Property	Not evaluated
HAS0000716	Judge Thomas Property 5	Not evaluated
HAS0000816	Judge Thomas Lee Property 2	Not evaluated
HAS0000916	Judge Thomas Property 3	Not evaluated
HAS0001016	Judge Thomas Lee Property 4	Not evaluated
HAS0001116	Judge Thomas Lee House	Not evaluated
HAS0001216	Blake House	Not evaluated
HAS0001311	William Rogers House	Not evaluated
HAS0001416	John Carneham House	Not evaluated
HAS0001505	James Lewis House	Eligible
HAS0001605	Andrew Hazlett House	Eligible
HAS0001712	James Kennedy	Not evaluated
HAS0001812	John Green House	Not evaluated
HAS0001915	Isiah McGee House	Not evaluated
HAS0002015	Micajah Johnson House	Not evaluated
HAS0002115	Samuel Lewis House	Not evaluated
HAS0002215	Samuel Lewis House	Not evaluated
HAS0002614	Rev John Walker Property 1	Eligible
HAS0002714	Rev John Walker Property 2	Eligible
HAS0002814	Rev John Walker House	Not evaluated
HAS0017005	Deersville United Methodist Church	Not evaluated
HAS0017105	Oak Vacation Home/Rental	Not evaluated
HAS0017205	Single Dwelling	Not evaluated
<i>HAS0017305</i>	<i>Mallernee House</i>	<i>Eligible</i>
HAS0017405	Single Dwelling	Not evaluated
HAS0017505	Single Dwelling	Not evaluated
<i>HAS0017605</i>	<i>Walker House</i>	<i>Eligible</i>
<i>HAS0017705</i>	<i>Single Dwelling</i>	<i>Eligible</i>
<i>HAS0017805</i>	<i>Ferguson House</i>	<i>Eligible</i>
HAS0017905	McMillan Log House	Not evaluated
HAS0018005	McMillian House	Not evaluated
<i>HAS0018105</i>	<i>Deersville General Store</i>	<i>Eligible</i>
<i>HAS0018205</i>	<i>Union Hotel</i>	<i>Eligible</i>
<i>HAS0018305</i>	<i>Deersville Community Hall</i>	<i>Eligible</i>
HAS0018405	Deersville Post Office	Eligible

Ohio Inventory No.	Name	NRHP Status
HAS0018505	The Corner Store	Eligible
HAS0018605	Hotel	Eligible
HAS0018705	site of Canton Log House	Not evaluated
HAS0018805	Deersville Presbyterian Church	Eligible
HAS0018905	Single Dwelling	Not evaluated
HAS0019005	Matthews House	Not evaluated
HAS0019306	Coultrap House	Not evaluated
HAS0019406	Pleasant Valley Methodist Church	Not evaluated
HAS0019506	Welsh House	Not evaluated
HAS0019606	John N Haverfield Farm	Not evaluated
HAS0020511	House #1	Not evaluated
HAS0022508	Crawford House	Not evaluated
HAS0022608	House, 45562 Unionvale Road	Not evaluated
HAS0022708	Octagon Barn	Not evaluated
HAS0022808	Stratton House	Not evaluated
HAS0026909	Clendening House	Not evaluated
HAS0027109	Samuel Richey Farm	Not evaluated
HAS0027209	Single Dwelling	Not evaluated
HAS0027509	Single Dwelling	Not evaluated
HAS0028109	Shawhan Residence	Not evaluated
HAS0028210	Single Dwelling	Not evaluated
HAS0028310	Johnson Homestead	Not evaluated
HAS0028410	Minksville Church of Christ	Not evaluated
HAS0028510	Nottingham Township District	Not evaluated
HAS0028610	Hines House	Not evaluated
HAS0028710	Henniss House	Not evaluated
HAS0028810	Ramsey House (1875)	Not evaluated
HAS0028910	Nottingham Township House	Not evaluated
HAS0029010	Rose House	Not evaluated
HAS0029110	Cope House	Not evaluated
HAS0029210	Hattonia Blacksmith Building	Not evaluated
HAS0029310	Vinka House	Not evaluated
HAS0029410	Ealorajemi Acres	Not evaluated
HAS0029510	Karl House	Not evaluated
HAS0029610	Karl Property	Not evaluated
HAS0029710	Millianoes House	Not evaluated
HAS0029810	Single Dwelling	Not evaluated
HAS0029910	Gladwin House	Not evaluated
HAS0030010	Single Dwelling	Not evaluated
HAS0030110	William Rowland House	Not evaluated
HAS0030210	Ourant's Schoolhouse	Not evaluated
HAS0030310	Wallace House	Not evaluated
HAS0030410	RV Fair House	Not evaluated
HAS0030511	Asbury Chapel	Not evaluated
HAS0030611	Budzik House	Not evaluated
HAS0030711	Wallace House	Not evaluated
HAS0030811	Mizer House	Not evaluated
HAS0030911	Shotwell House	Not evaluated

Ohio Inventory No.	Name	NRHP Status
HAS0031011	Harrison County Home-Infirmery	Eligible
HAS0031111	Harrison County Home-Insane House	Not evaluated
HAS0031211	Harrison Co Home Barn	Eligible
HAS0031311	Harrison County Home-Boiler House	Not evaluated
HAS0031411	Heavilin Farm	Not evaluated
HAS0031511	Mallernee House	Not evaluated
HAS0031611	John Finical Farm	Not evaluated
HAS0031712	Pittis House	Not evaluated
HAS0031812	Single Dwelling	Not evaluated
HAS0031912	Kaminsky & Goreing House	Not evaluated
HAS0032012	Stine House	Not evaluated
HAS0032112	Leasure House	Not evaluated
HAS0032212	Cramblett House	Not evaluated
HAS0032312	Ken New House	Not evaluated
HAS0032412	Randy Stine House	Not evaluated
HAS0032512	RA Scott House	Not evaluated
HAS0032612	Alan Bendure House	Not evaluated
HAS0032712	Ronald Toland House	Not evaluated
HAS0032812	Robert Bell House	Not evaluated
HAS0032912	Harry A Green House	Not evaluated
HAS0033012	Ruth Ternes House	Not evaluated
HAS0033112	Ralph Brill House	Not evaluated
HAS0033212	Hamilton House	Not evaluated
HAS0033312	John Tarleton House	Not evaluated
HAS0033412	Morton House	Not evaluated
HAS0033512	Rowland House	Not evaluated
HAS0033612	Furmanski House	Not evaluated
HAS0033712	Freeport United Methodist Church	Not evaluated
HAS0033812	Furmanski House	Not evaluated
HAS0033912	Samuel Bopp Jr. House	Not evaluated
HAS0034012	Gilcher Pousna House	Not evaluated
HAS0034112	Stillion's Restaurant	Not evaluated
HAS0034212	Lightell House	Not evaluated
HAS0034312	Cars of Yesteryear	Not evaluated
HAS0034412	Roger Phillip House	Not evaluated
HAS0034512	Wayne Karl House	Not evaluated
HAS0034612	TO Holliday's Livery Stable	Not evaluated
HAS0034712	Kenneth Bear House	Not evaluated
HAS0034812	Richard Hutson House	Not evaluated
HAS0034912	Gorby House	Not evaluated
HAS0035012	Charley's Barber Shop	Not evaluated
HAS0035112	G Brower House	Not evaluated
HAS0035212	Flo's	Not evaluated
HAS0035312	Wm & Forest Davidson House	Not evaluated
HAS0035412	Anna Miller House	Not evaluated
HAS0035512	Freeport High School	Not evaluated
HAS0035612	Blacktop Patch	Not evaluated
HAS0035712	Herman R. Ripley House	Not evaluated

Ohio Inventory No.	Name	NRHP Status
HAS0035812	Arthur Walton House	Not evaluated
HAS0035912	Freeport School	Not evaluated
HAS0036012	Floyd's Barber Shop	Not evaluated
HAS0036112	Dr H.T. Weber House	Not evaluated
HAS0036212	Wm Palmer House	Not evaluated
HAS0036312	John Bair House	Not evaluated
HAS0036412	Hall House	Not evaluated
HAS0036512	Crossan House	Not evaluated
HAS0036612	Vanfossen House	Not evaluated
HAS0036712	Jail	Not evaluated
HAS0036812	Freeport Township Hall	Not evaluated
HAS0036912	Freeport Presbyterian Church	Not evaluated
HAS0037012	C. Vermillton House	Not evaluated
HAS0037112	Mrs. Charles Melville	Not evaluated
HAS0037412	Sixteen-Sided Barn	Not evaluated
HAS0037512	No 7 School	Not evaluated
HAS0037612	No 4 School	Not evaluated
HAS0037712	Skull Fork Covered Bridge	Not evaluated
HAS0037813	Mizer's Octagon Barn	Not evaluated
<i>HAS0037913</i>	<i>Nottingham United Press Church</i>	<i>Eligible</i>
HAS0038013	Noss House	Not evaluated
HAS0038113	Samuel Colvin House	Not evaluated
HAS0038214	E Brown Street North side	Not evaluated
HAS0038314	Simmons House	Not evaluated
HAS0038414	Single Dwelling	Not evaluated
HAS0038514	Ferda House	Eligible
HAS0038614	One Room Schoolhouse	Not evaluated
HAS0038714	Single Dwelling	Not evaluated
HAS0038814	Single Dwelling	Not evaluated
HAS0038914	New Athens School Gym	Not evaluated
HAS0039014	New Athens School	Not evaluated
HAS0039114	Single Dwelling	Not evaluated
HAS0039214	Single Dwelling	Not evaluated
HAS0039314	Single Dwelling	Not evaluated
HAS0039414	Samuel J Sharp H&E	Not evaluated
HAS0039514	Town Meeting Hall	Not evaluated
HAS0039614	Single Dwelling	Not evaluated
HAS0039714	Leatherman House	Not evaluated
HAS0039814	Single Dwelling	Not evaluated
HAS0039914	Multiple Dwelling	Not evaluated
HAS0040014	Single Dwelling	Not evaluated
HAS0040114	Post Office	Not evaluated
HAS0040214	Butler House	Not evaluated
HAS0040314	Single Dwelling	Not evaluated
HAS0040414	Single Dwelling	Not evaluated
HAS0040514	Office	Not evaluated
HAS0040614	Single Dwelling	Not evaluated
HAS0040714	Single Dwelling	Not evaluated

Ohio Inventory No.	Name	NRHP Status
HAS0040814	HH & B Trapping Supplies	Not evaluated
HAS0040914	Single Dwelling	Not evaluated
HAS0041014	Carten House	Not evaluated
HAS0041114	Smith House	Not evaluated
HAS0041214	Single Dwelling	Not evaluated
HAS0041314	Sutton House	Not evaluated
HAS0041414	Presbyterian Church Bell	Not evaluated
HAS0041514	McLaughlin House	Not evaluated
HAS0041614	United Methodist Church	Not evaluated
HAS0041714	Single Dwelling	Not evaluated
HAS0041814	Single Dwelling	Not evaluated
HAS0041914	Single Dwelling	Not evaluated
HAS0042014	Ola Culbertson House	Not evaluated
HAS0042114	Single Dwelling	Not evaluated
HAS0042215	O'Neil House	Not evaluated
HAS0042315	Single Dwelling	Not evaluated
HAS0042415	Single Dwelling	Not evaluated
HAS0042515	Single Dwelling	Not evaluated
HAS0042615	Ignace House	Not evaluated
HAS0042715	Carter House	Not evaluated
HAS0042815	Potkowski House	Not evaluated
HAS0042915	Herron House	Not evaluated
HAS0043015	Binns House	Not evaluated
HAS0043115	Harrisville Beauty Salon	Not evaluated
HAS0043215	Single Dwelling	Not evaluated
HAS0043315	Single Dwelling	Not evaluated
HAS0043415	Single Dwelling	Not evaluated
HAS0043515	Cullen House	Not evaluated
HAS0043615	Knights of Pythias Hall	Not evaluated
HAS0043715	JB Giffen's Store	Not evaluated
HAS0043815	Corbett House	Not evaluated
HAS0043915	Havalin Hous	Not evaluated
HAS0044015	Havalin House	Not evaluated
HAS0044115	Covenant Presbyterian Church	Not evaluated
HAS0044215	Salvation Army School	Not evaluated
HAS0044315	Maple Lawn Farm	Not evaluated
HAS0044415	Lukich House	Not evaluated
HAS0044516	Johnson's Hilltop Antiques	Not evaluated
HAS0044616	Single Dwelling	Not evaluated
HAS0044716	Single Dwelling	Not evaluated
HAS0044816	Ralph Crother House	Not evaluated
HAS0044916	Single Dwelling	Not evaluated
HAS0045016	Single Dwelling	Not evaluated
HAS0045116	Cadiz Parts Warehouse	Not evaluated
HAS0045216	Ohio Power Company	Not evaluated
HAS0045316	Harrison County Jail & Sheriff	Not evaluated
HAS0045416	Barcroft House	Not evaluated
HAS0045516	Coffland House	Not evaluated

Ohio Inventory No.	Name	NRHP Status
HAS0045616	Single Dwelling	Not evaluated
HAS0045716	The Woods	Not evaluated
HAS0045816	Snyder House	Not evaluated
HAS0045916	William J. Clark House	Not evaluated
HAS0046016	Single Dwelling	Not evaluated
HAS0046116	Richard Pinnick House	Not evaluated
HAS0046216	Osburn House	Not evaluated
HAS0046316	Single Dwelling	Not evaluated
HAS0046416	Agricultural Outbuildings	Not evaluated
HAS0046516	Single Dwelling	Not evaluated
HAS0046616	Barry House Windover	Not evaluated
HAS0046716	Jamison Farm	Not evaluated
HAS0046816	Mitchell House	Not evaluated
HAS0046916	Baker Building	Not evaluated
HAS0047016	Emerson W Long House	Not evaluated
HAS0047116	Myers House	Not evaluated
HAS0047216	McSherrif House	Not evaluated
HAS0047316	Wood House	Not evaluated
<i>HAS0047416</i>	<i>Emerson M Long House</i>	<i>Eligible</i>
<i>HAS0047516</i>	<i>Cofflands House</i>	<i>Eligible</i>
<i>HAS0047616</i>	<i>Mikesell House</i>	<i>Eligible</i>
<i>HAS0047716</i>	<i>Harris House</i>	<i>Eligible</i>
<i>HAS0047816</i>	<i>Phillippi House</i>	<i>Eligible</i>
<i>HAS0047916</i>	<i>Beetham House</i>	<i>Eligible</i>
HAS0048016	Coffy Building	Not evaluated
HAS0048116	General Custer Hotel	Not evaluated
HAS0048216	Gerri's Country Kitchen	Not evaluated
HAS0048316	Harrison Co Multi-Purpose Center	Not evaluated
HAS0048416	Pratt & Lambert Paint Store	Not evaluated
HAS0048516	The Uptown Tan Club	Not evaluated
HAS0048616	McCrea House	Not evaluated
HAS0048716	Methodist Episcopal Church	Not evaluated
HAS0048816	Dennis Link Realty	Not evaluated
HAS0048916	Russell House	Not evaluated
HAS0049016	Single Dwelling	Not evaluated
HAS0049116	HW Birney House	Not evaluated
HAS0049216	Gilbert House	Not evaluated
HAS0049316	Balls House	Not evaluated
HAS0049416	Single Dwelling	Not evaluated
HAS0049516	Oakdale Farm	Not evaluated
HAS0049616	Oakdale Farm - Main Barn	Not evaluated
HAS0049716	Gray's Beauty Shop	Not evaluated
HAS0049816	Home Restaurant	Not evaluated
HAS0049916	Harrison News Herald	Not evaluated
<i>HAS0050016</i>	<i>Farmer's Mutual Insurance</i>	<i>Eligible</i>
HAS0050116	Western Auto	Not evaluated
<i>HAS0050216</i>	<i>Clark-Kirkland Funeral Home</i>	<i>Eligible</i>
HAS0050316	Fred Wood House	Not evaluated

Ohio Inventory No.	Name	NRHP Status
HAS0050416	Patton House	Not evaluated
HAS0050516	Cadiz True Value Hardware	Not evaluated
HAS0050616	Class Act Hair Designs	Not evaluated
<i>HAS0050716</i>	<i>Turner House</i>	<i>Eligible</i>
HAS0050816	Cadiz Insurance Agency	Not evaluated
<i>HAS0050916</i>	<i>Mark Anthony's Pizza</i>	<i>Eligible</i>
HAS0051016	Colonial Jewelers	Not evaluated
<i>HAS0051116</i>	<i>Tour Travel Unlimited</i>	<i>Eligible</i>
HAS0051216	Phoenix Pastry	Not evaluated
HAS0051316	Gary B Pearch Optometrist	Not evaluated
HAS0051416	Financial Institution	Not evaluated
HAS0051516	Cope's Studio	Not evaluated
HAS0051616	McGonigal Apartments	Not evaluated
HAS0051716	Gableton Video & Productions	Not evaluated
HAS0051816	G A West Home	Not evaluated
HAS0051916	Living Water Assembly of God	Not evaluated
HAS0052016	Harrison Co Historical Soc	Not evaluated
HAS0052116	Veterans of Foreign Wars	Not evaluated
HAS0052216	Single Dwelling	Not evaluated
HAS0052316	Single Dwelling	Not evaluated
HAS0052416	Single Dwelling	Not evaluated
HAS0052516	St James Church	Not evaluated
HAS0052616	Single Dwelling	Not evaluated
HAS0052716	Multiple Dwelling	Not evaluated
HAS0052816	Single Dwelling	Not evaluated
HAS0052916	Kirkland House	Not evaluated
HAS0053016	Single Dwelling	Not evaluated
HAS0053116	Single Dwelling	Not evaluated
HAS0053216	Alleeman House	Not evaluated
HAS0053316	Single Dwelling	Not evaluated
HAS0053416	Miller House	Not evaluated
HAS0053516	Single Dwelling	Not evaluated
HAS0053616	DA Hollingsworth House	Not evaluated
HAS0053716	Single Dwelling	Not evaluated
HAS0053816	C Gillespie House	Not evaluated
HAS0053916	Busby House	Not evaluated
HAS0054016	Single Dwelling	Not evaluated
HAS0054116	Single Dwelling	Not evaluated
HAS0054216	Single Dwelling	Not evaluated
HAS0054316	Single Dwelling	Not evaluated
HAS0054416	Cadiz Junior High School	Not evaluated
HAS0054516	Cadiz Senior High School	Not evaluated
HAS0054616	Dr HH Harrison House	Not evaluated
HAS0054716	JN Hanna House	Not evaluated
HAS0054816	Single Dwelling	Not evaluated
HAS0054916	Single Dwelling	Not evaluated
HAS0055016	Single Dwelling	Not evaluated
HAS0055116	Single Dwelling	Not evaluated

Ohio Inventory No.	Name	NRHP Status
HAS0055216	Cadiz Church & Office Supply	Not evaluated
HAS0055316	Single Dwelling	Not evaluated
HAS0055416	Jack Brown Painting	Not evaluated
HAS0055516	Single Dwelling	Not evaluated
HAS0055616	Single Dwelling	Not evaluated
HAS0055716	Kimble House	Not evaluated
HAS0055816	Single Dwelling	Not evaluated
HAS0055916	Single Dwelling	Not evaluated
HAS0056016	Safe & Sound	Not evaluated
HAS0056116	Single Dwelling	Not evaluated
HAS0056216	Town Square Drug Store	Not evaluated
HAS0056316	Town Square Drug Center	Not evaluated
HAS0056416	H&R Block Income Tax	Not evaluated
HAS0056516	Barber Shop	Not evaluated
HAS0056616	The Carson Co Walker Mufflers	Not evaluated
HAS0056716	Walrath Insurance Agency	Not evaluated
HAS0056816	Fellowship Hall UP Church	Not evaluated
HAS0056916	Cadiz Laundromat	Not evaluated
<i>HAS0057016</i>	<i>Dr JD Wortman</i>	<i>Eligible</i>
<i>HAS0057116</i>	<i>Beetham</i>	<i>Eligible</i>
<i>HAS0057216</i>	<i>David A Hollingsworth House</i>	<i>Eligible</i>
<i>HAS0057316</i>	<i>Campbell House</i>	<i>Eligible</i>
HAS0057416	United Presbyterian Church	Not evaluated
<i>HAS0057516</i>	<i>John S Pearce House</i>	<i>Eligible</i>
<i>HAS0057616</i>	<i>Jenny's New & Used Store</i>	<i>Eligible</i>
<i>HAS0057716</i>	<i>Single Dwelling</i>	<i>Eligible</i>
<i>HAS0057816</i>	<i>CM Hogg House</i>	<i>Eligible</i>
HAS0057916	Rev J Kerr Farm	Not evaluated
HAS0058016	Craig Hamilton House	Not evaluated
HAS0058116	Cope House	Not evaluated
HAS0058216	Single Dwelling	Not evaluated
HAS0058316	Single Dwelling	Not evaluated
HAS0058416	Single Dwelling	Not evaluated
HAS0058516	Dr HJ Dickey House	Not evaluated
HAS0058616	Single Dwelling	Not evaluated
HAS0058716	Single Dwelling	Not evaluated
HAS0058816	Carl Crawford House	Not evaluated
HAS0058916	W.F. Gammeter House	Not evaluated
HAS0059016	Ferrell House	Not evaluated
HAS0059116	Single Dwelling	Not evaluated
HAS0059216	Single Dwelling	Not evaluated
HAS0059316	Single Dwelling	Not evaluated
HAS0059516	A.S. Porter House	Not evaluated
HAS0059616	Single Dwelling	Not evaluated
HAS0059716	Single Dwelling	Not evaluated
HAS0059816	Taylor House	Not evaluated
HAS0059916	Gross House	Not evaluated
HAS0060016	Thompson House	Not evaluated

Ohio Inventory No.	Name	NRHP Status
HAS0060116	Thompson House	Not evaluated
HAS0060216	Single Dwelling	Not evaluated
HAS0060316	Single Dwelling	Not evaluated
HAS0060416	Single Dwelling	Not evaluated
HAS0060516	Single Dwelling	Not evaluated
HAS0060616	American Legion Post	Not evaluated
HAS0060716	Single Dwelling	Not evaluated
HAS0060816	Single Dwelling	Not evaluated
HAS0060916	Single Dwelling	Not evaluated
HAS0061016	Cadiz Seed Company	Not evaluated
HAS0061116	Single Dwelling	Not evaluated
HAS0061216	Mattern House	Not evaluated
HAS0061316	Ephraim Clark McFadden House	Not evaluated
HAS0061416	McConn House	Not evaluated
HAS0061507	Heavilin House	Not evaluated
HAS0061708	Single Dwelling	Not evaluated
HAS0061811	Standingstone Fork Bridge	Not evaluated
HAS0061915	Harry Hopkins Barn	Not evaluated
HAS0062008	Jeffrey J. Jolly House	Not evaluated
HAS0062215	Branson's Ridge	Not evaluated
HAS0062308	Valley Mining & Parkinson House	Not evaluated
HAS0062414	Barricklow Farm	Not evaluated
HAS0062614	Webb Road	Not evaluated
HAS0062716	James B Jamison Farm	Not evaluated
HAS0062814	BM Hartley House	Not evaluated
HAS0062914	Coal Mine	Not evaluated
HAS0063016	John C Jamison Carriage House	Not evaluated
HAS0063116	Building	Not evaluated
HAS0063215	Adena Gob Restoration Project	Not evaluated
HAS0063311	Wm. Jamison Sandstone Quarry	Not evaluated
HAS0063411	Wm. Jamison Farmstead	Not evaluated
HAS0063513	Barnes Farm	Not evaluated
HAS0063613	Township Rd 401 Abandoned	Not evaluated
HAS0063716	William Boggs House	Not evaluated
HAS0063811	House #2	Not evaluated
HAS0064014	Applegarth House	Not evaluated
HAS0064211	Wm McFadden House	Not evaluated
HAS0064511	McFadden Barn & Corn Crib	Not evaluated
HAS0064708	Croskey Barn	Not evaluated
HAS0064815	Charles Dunlap Farm	Not evaluated
HAS0064915	Adena Tunnel	Not evaluated
HAS0065311	Barn	Not evaluated
HAS0065411	Dickerson Church	Not evaluated
HAS0067008	House at 82470 Reservoir Drive	Not evaluated
HAS0069612	Huffman House	Not evaluated
HAS0069712	House	Not evaluated
HAS00xxx16	119 N Charleston Street	Not evaluated
JEF0005213	O'Bradovitch House	Not evaluated

Ohio Inventory No.	Name	NRHP Status
JEF0055113	Bernosky Pizza	Not evaluated
JEF0055213	House	Not evaluated
JEF0055313	Shell Station	Not evaluated
JEF0061615	Griffith House	Not evaluated
JEF0062915	Riffe William House	Not evaluated
JEF0085515	Adena Gob Reclamation Project	Not evaluated

Note: Abbreviations for each county are at the beginning of each Site No. (BEL: Belmont, JEF: Jefferson, HAS: Harrison)
Source: OHC 2021.

TABLE 11: Known Archaeological Resources in Study Area

SITE NO.	SITE TYPE	NRHP Status	IN PROJECT AREA (Y/N)
BL0003	Opatrny Village Site	Listed	N
BL0004	Prehistoric	Not Evaluated	N
BL0006	Brokaw Site	Listed	N
BL0017	Prehistoric	Not Evaluated	N
BL0018	Prehistoric	Not Evaluated	N
BL0019	Prehistoric	Not Evaluated	N
BL0020	Prehistoric	Not Evaluated	N
BL0062	Prehistoric	Not Evaluated	N
BL0086	Prehistoric	Not Evaluated	N
BL0087	Prehistoric	Not Evaluated	N
BL0110	Prehistoric	Not Evaluated	N
BL0111	Prehistoric	Not Evaluated	N
BL0112	Prehistoric	Not Evaluated	N
BL0113	Prehistoric	Not Evaluated	N
BL0114	Historic	Not Evaluated	N
BL0115	Historic	Not Evaluated	N
BL0116	Historic	Not Evaluated	N
BL0143	Prehistoric	Not Evaluated	N
BL0144	Prehistoric	Not Evaluated	N
BL0145	Prehistoric	Not Evaluated	N
BL0146	Prehistoric	Not Evaluated	N
BL0147	Prehistoric	Not Evaluated	N
BL0148	Historic	Not Evaluated	N
BL0154	Historic	Not Evaluated	N
BL0155	Historic	Not Evaluated	N
BL0156	Prehistoric	Not Evaluated	N
BL0166	Historic	Not Evaluated	N
BL0167	Historic	Not Evaluated	N
BL0168	Prehistoric	Not Evaluated	N
BL0169	Prehistoric	Not Evaluated	N
BL0170	Prehistoric	Not Evaluated	N
BL0171	Prehistoric	Not Evaluated	N
BL0172	Historic	Not Evaluated	N
BL0173	Prehistoric	Not Evaluated	N
BL0181	Historic	Not Evaluated	N
BL0183	Prehistoric	Not Evaluated	N

SITE NO.	SITE TYPE	NRHP Status	IN PROJECT AREA (Y/N)
BL0184	Prehistoric	Not Evaluated	N
BL0185	Prehistoric and Historic	Not Evaluated	N
BL0188	Historic	Not Evaluated	N
BL0189	Historic	Not Evaluated	N
BL0196	Prehistoric and Historic	Not Evaluated	N
BL0197	Historic	Not Evaluated	N
BL0198	Historic	Not Evaluated	N
BL0199	Prehistoric and Historic	Not Evaluated	N
BL0200	Prehistoric	Not Evaluated	N
BL0201	Prehistoric	Not Evaluated	N
BL0206	Historic	Not Evaluated	N
BL0208	Prehistoric	Not Evaluated	N
BL0209	Prehistoric	Not Evaluated	N
BL0210	Prehistoric	Not Evaluated	N
BL0213	Prehistoric	Not Evaluated	N
BL0214	Prehistoric	Not Evaluated	N
BL0215	Historic	Not Evaluated	N
BL0216	Prehistoric and Historic	Not Evaluated	N
BL0236	Historic	Not Evaluated	N
BL0254	Prehistoric	Not Evaluated	N
BL0255	Prehistoric and Historic	Not Evaluated	N
BL0256	Prehistoric and Historic	Not Evaluated	N
BL0257	Prehistoric and Historic	Not Evaluated	N
BL0258	Prehistoric	Not Evaluated	N
BL0259	Prehistoric	Not Evaluated	N
BL0260	Historic	Not Evaluated	N
BL0264	Historic	Not Evaluated	N
BL0271	Prehistoric	Not Evaluated	N
BL0272	Prehistoric and Historic	Not Evaluated	N
BL0273	Historic	Not Evaluated	N
BL0274	Historic	Not Evaluated	N
BL0280	Historic	Not Evaluated	N
BL0281	Historic	Not Evaluated	N
BL0283	Historic	Not Evaluated	N
BL0284	Prehistoric	Not Evaluated	N
BL0285	Prehistoric	Not Evaluated	N
BL0286	Prehistoric	Not Evaluated	N
BL0333	Historic	Not Evaluated	N
BL0334	Prehistoric	Not Evaluated	N
BL0335	Prehistoric	Not Evaluated	N
BL0336	Prehistoric	Not Evaluated	N
BL0337	Prehistoric	Not Evaluated	N
BL0341	Prehistoric and Historic	Not Evaluated	N
BL0342	Historic	Not Evaluated	N
BL0345	Historic	Not Evaluated	N
BL0346	Prehistoric	Not Evaluated	N
BL0347	Prehistoric	Not Evaluated	N
BL0350	Historic	Not Evaluated	N

SITE NO.	SITE TYPE	NRHP Status	IN PROJECT AREA (Y/N)
BL0351	Historic	Not Evaluated	N
BL0352	Prehistoric	Not Evaluated	N
BL0353	Historic	Not Evaluated	N
BL0354	Prehistoric	Not Evaluated	N
BL0355	Prehistoric	Not Evaluated	N
BL0356	Prehistoric	Not Evaluated	N
BL0357	Prehistoric	Not Evaluated	N
BL0358	Prehistoric	Not Evaluated	N
BL0359	Prehistoric and Historic	Not Evaluated	N
BL0360	Prehistoric	Not Evaluated	N
BL0361	Prehistoric	Not Evaluated	N
BL0362	Prehistoric	Not Evaluated	N
BL0363	Prehistoric and Historic	Not Evaluated	N
BL0364	Prehistoric	Not Evaluated	N
BL0368	Prehistoric	Not Evaluated	N
BL0388	Prehistoric	Not Evaluated	N
BL0397	Historic	Not Evaluated	N
BL0412	Prehistoric	Not Evaluated	N
BL0414	Historic	Not Evaluated	N
BL0415	Historic	Not Evaluated	N
BL0452	Historic	Not Evaluated	N
BL0453	Historic	Not Evaluated	N
BL0483	Historic	Not Evaluated	N
BL0484	Historic	Not Evaluated	N
BL0485	Historic	Not Evaluated	N
BL0489	Historic	Not Evaluated	N
BL0495	Prehistoric	Not Evaluated	N
BL0501	Historic	Not Evaluated	N
BL0509	Historic	Not Evaluated	N
BL0513	Prehistoric	Not Evaluated	N
BL0517	Historic	Not Evaluated	N
BL0518	Prehistoric and Historic	Not Evaluated	N
BL0520	Historic	Not Evaluated	N
BL0523	Historic	Not Evaluated	N
BL0528	Prehistoric	Not Evaluated	N
BL0529	Prehistoric	Not Evaluated	N
BL0530	Prehistoric	Not Evaluated	N
HN0001	Prehistoric	Not Evaluated	N
HN0002	Prehistoric	Not Evaluated	N
HN0003	Prehistoric	Not Evaluated	N
HN0004	Prehistoric	Not Evaluated	N
HN0005	Prehistoric	Not Evaluated	N
HN0006	Prehistoric	Not Evaluated	N
HN0007	Prehistoric	Not Evaluated	N
HN0008	Prehistoric	Not Evaluated	N
HN0017	Prehistoric	Not Evaluated	N
HN0018	Historic	Not Evaluated	N
HN0019	Historic	Not Evaluated	N

SITE NO.	SITE TYPE	NRHP Status	IN PROJECT AREA (Y/N)
HN0020	Historic	Not Evaluated	N
HN0023	Prehistoric	Not Evaluated	N
HN0041	Prehistoric	Not Evaluated	N
HN0042	Prehistoric	Not Evaluated	N
HN0043	Prehistoric	Not Evaluated	N
HN0044	Prehistoric	Not Evaluated	N
HN0045	Historic	Not Evaluated	N
HN0051	Historic	Not Evaluated	N
HN0052	Prehistoric	Not Evaluated	N
HN0053	Prehistoric	Not Evaluated	N
HN0054	Prehistoric	Not Evaluated	N
HN0059	Prehistoric and Historic	Not Evaluated	N
HN0060	Historic	Not Evaluated	N
HN0061	Historic	Not Evaluated	N
HN0062	Prehistoric	Not Evaluated	N
HN0064	Prehistoric and Historic	Not Evaluated	N
HN0066	Prehistoric and Historic	Not Evaluated	N
HN0067	Prehistoric	Not Evaluated	N
HN0068	Prehistoric	Not Evaluated	N
HN0069	Historic	Not Evaluated	N
HN0070	Prehistoric	Not Evaluated	N
HN0071	Prehistoric	Not Evaluated	N
HN0072	Prehistoric	Not Evaluated	N
HN0073	Historic	Not Evaluated	N
HN0074	Prehistoric	Not Evaluated	N
HN0075	Prehistoric	Not Evaluated	N
HN0079	Historic	Not Evaluated	N
HN0080	Prehistoric	Not Evaluated	N
HN0081	Prehistoric and Historic	Not Evaluated	N
HN0082	Prehistoric and Historic	Not Evaluated	N
HN0083	Prehistoric	Not Evaluated	N
HN0085	Prehistoric	Not Evaluated	N
HN0086	Prehistoric	Not Evaluated	N
HN0087	Prehistoric	Not Evaluated	N
HN0088	Historic	Not Evaluated	N
HN0089	Historic	Not Evaluated	N
HN0090	Historic	Not Evaluated	N
HN0091	Prehistoric and Historic	Not Evaluated	N
HN0092	Historic	Not Evaluated	N
HN0093	Historic	Not Evaluated	N
HN0094	Historic	Not Evaluated	N
HN0095	Historic	Not Evaluated	N
HN0098	Prehistoric	Not Evaluated	N
HN0099	Prehistoric	Not Evaluated	N
HN0100	Prehistoric	Not Evaluated	N
HN0101	Prehistoric	Not Evaluated	N
HN0102	Historic	Not Evaluated	N
HN0103	Prehistoric	Not Evaluated	N

SITE NO.	SITE TYPE	NRHP Status	IN PROJECT AREA (Y/N)
HN0104	Prehistoric	Not Evaluated	N
HN0105	Prehistoric	Not Evaluated	N
HN0107	Historic	Not Evaluated	Y
HN0108	Historic	Not Evaluated	Y
HN0109	Prehistoric	Not Evaluated	N
HN0110	Prehistoric	Not Evaluated	N
HN0111	Prehistoric	Not Evaluated	N
HN0112	Prehistoric	Not Evaluated	N
HN0113	Prehistoric	Not Evaluated	N
HN0114	Prehistoric	Not Evaluated	N
HN0115	Prehistoric	Not Evaluated	N
HN0116	Prehistoric	Not Evaluated	N
HN0117	Prehistoric	Not Evaluated	N
HN0118	Prehistoric	Not Evaluated	N
HN0119	Historic	Not Evaluated	N
HN0120	Historic	Not Evaluated	N
HN0121	Prehistoric	Not Evaluated	N
HN0133	Historic	Not Evaluated	N
HN0134	Historic	Not Evaluated	N
HN0135	Historic	Not Evaluated	N
HN0136	Historic	Not Evaluated	N
HN0137	Historic	Not Evaluated	N
HN0138	Prehistoric	Not Evaluated	N
HN0139	Prehistoric	Not Evaluated	N
HN0140	Prehistoric	Not Evaluated	N
HN0141	Prehistoric	Not Evaluated	N
HN0142	Prehistoric	Not Evaluated	N
HN0158	Prehistoric	Not Evaluated	N
HN0159	Historic	Not Evaluated	N
HN0160	Historic	Not Evaluated	N
HN0161	Historic	Not Evaluated	N
HN0162	Historic	Not Evaluated	N
HN0163	Historic	Not Evaluated	N
HN0164	Historic	Not Evaluated	N
HN0165	Prehistoric	Not Evaluated	N
HN0168	Prehistoric	Not Evaluated	N
HN0170	Prehistoric	Not Evaluated	N
HN0171	Historic	Not Evaluated	N
HN0182	Historic	Not Evaluated	N
HN0183	Historic	Not Evaluated	N
HN0184	Historic	Not Evaluated	N
HN0185	Prehistoric	Not Evaluated	N
HN0187	Prehistoric	Not Evaluated	N
HN0207	Prehistoric	Not Evaluated	N
HN0210	Historic	Not Evaluated	N
HN0211	Historic	Not Evaluated	N
HN0212	Prehistoric	Not Evaluated	N
HN0217	Prehistoric	Not Evaluated	N

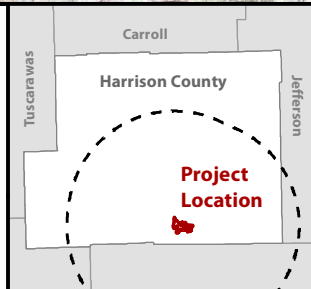
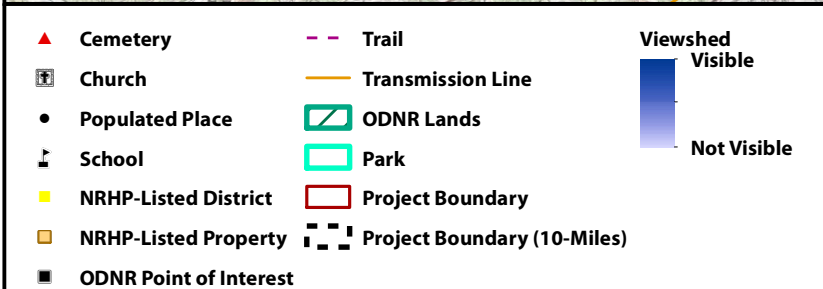
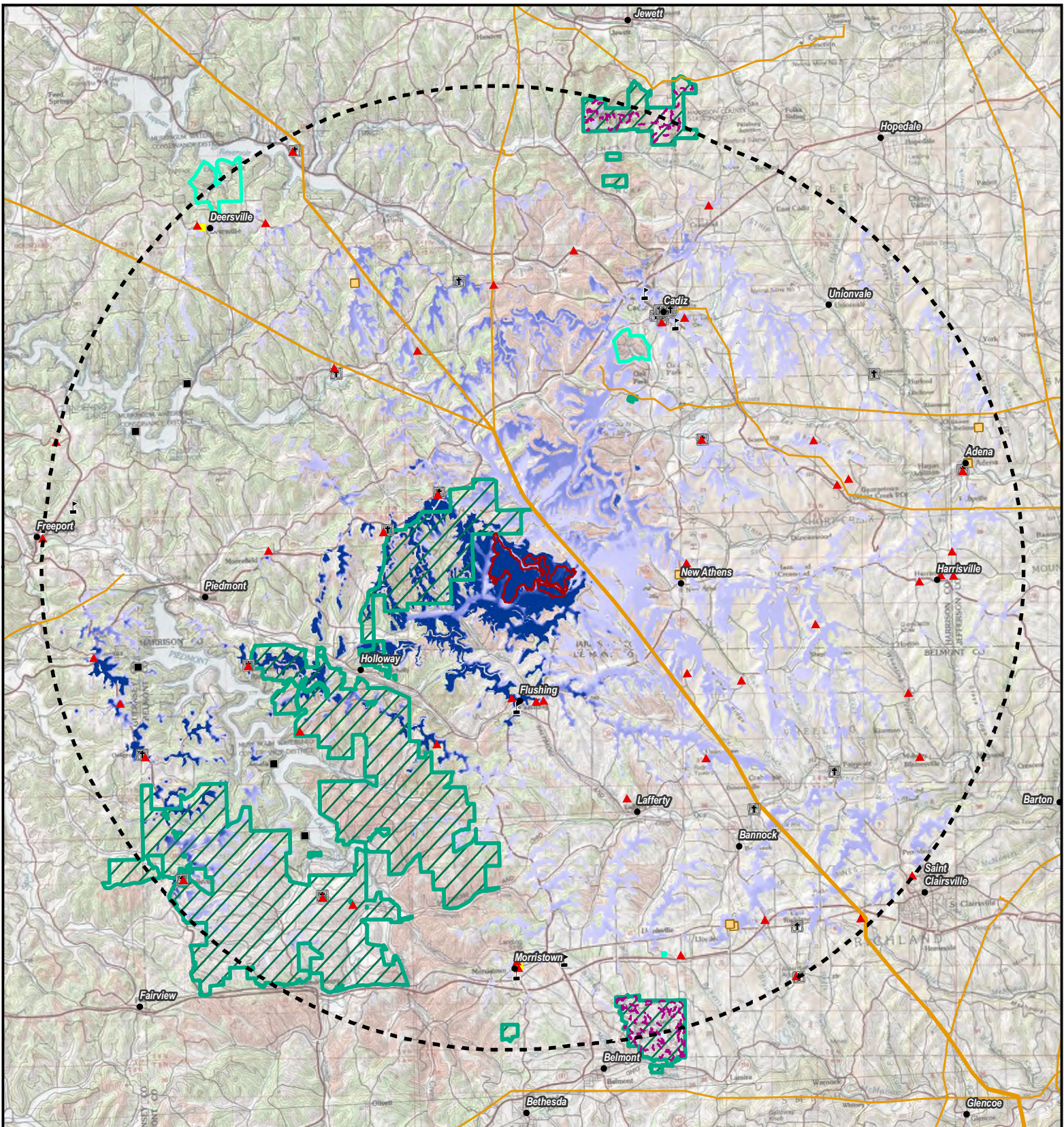
SITE NO.	SITE TYPE	NRHP Status	IN PROJECT AREA (Y/N)
HN0235	Historic	Not Evaluated	N
HN0236	Prehistoric	Not Evaluated	N
HN0238	Prehistoric	Not Evaluated	N
HN0240	Prehistoric	Not Evaluated	N
HN0241	Prehistoric	Not Evaluated	N
HN0254	Historic	Not Evaluated	N
HN0271	Prehistoric	Not Evaluated	N
HN0281	Prehistoric	Not Evaluated	N
HN0285	Prehistoric	Not Evaluated	N
HN0286	Prehistoric	Not Evaluated	N
HN0298	Historic	Not Evaluated	N
HN0299	Prehistoric and Historic	Not Evaluated	N
HN0300	Historic	Not Evaluated	N
HN0305	Historic	Not Evaluated	N
HN0306	Historic	Not Evaluated	N
JE0060	Prehistoric	Not Evaluated	N
JE0061	Prehistoric	Not Evaluated	N
JE0083	Historic	Not Evaluated	N
JE0121	Historic	Not Evaluated	N
JE0132	Historic	Not Evaluated	N
JE0184	Prehistoric	Not Evaluated	N

Note: Abbreviations for each county are at the beginning of each Site No. (BL: Belmont, JE: Jefferson, HN: Harrison)

Source: OHC 2021.

References

- Environmental Systems Research Institute, Inc. [ESRI]. 2018. Data and Maps: Datasets (Parks, Federal Lands, Recreation Areas, Golf Courses, Schools, Churches, Cemetery).
<https://www.arcgis.com/home/group.html?q=USA%20layer%20package&t=group&id=24838c2d95e14dd18c25e9bad55a7f82&view=list&start=1&num=20#content>
- Ohio Department of Natural Resources (ODNR). 2016. ODNR Lands and Facilities. Accessed online at: <https://gis.ohiodnr.gov/MapView/?config=ODNRLands>. Accessed May 2021.
- ODNR. 2017a. GIS Metadata Downloads. ODNR Points of Interest. Accessed online at: <https://ohiodnr.gov/wps/portal/gov/odnr/business-and-industry/services-to-business-industry/gis-mapping-services/metadata-downloads>. Accessed May 2021.
- ODNR. 2017b. GIS Metadata Downloads. ODNR Trails. Accessed online at: <https://ohiodnr.gov/wps/portal/gov/odnr/business-and-industry/services-to-business-industry/gis-mapping-services/metadata-downloads>. Accessed May 2021.
- ODNR. 2021. Ohio's Scenic Rivers Program. Accessed online at: <https://ohiodnr.gov/wps/portal/gov/odnr/discover-and-learn/land-water/rivers-streams-wetlands/scenic-rivers-program>. Accessed July 14, 2021.
- Ohio Genealogical Society (OGS). 2021. Cemetery Search. Online Database, Ohio Genealogical Society, Bellville. Accessed March 2, 2021, <https://www.ogs.org/ohio-cemetery-search/>.
- Ohio History Connection (OHC). 2021. Ohio Mapping System (OMS) GIS web application. Ohio History Connection, Ohio History Center, Columbus. Accessed March 2, 2021, <https://www.ohiohistory.org/preserve/state-historic-preservation-office/mapping>.
- Stutts, M. 2014. National Register of Historic Places. National Register properties are located throughout the United States and their associated territories around the globe. Accessed online at: <https://irma.nps.gov/DataStore/Reference/Profile/2210280>. Accessed May 2021.



Data Sources: ESRI 2016-2020; WSP 2021; BQ Energy 2021; NPS; HFILD; USGS; ODNR

